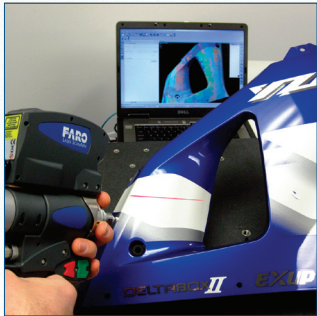


**FAROArm®**

**Product Catalog  
Language: English-US  
August 2009**



**FARO®**



## Arm Systems

### FaroArm

#### Platinum

##### 4 Foot

##### 6 Axis



12750-001: Platinum, 4 ft (1.2m), 6 Axis with Bluetooth

Platinum, 4 ft (1.2m), 6 Axis. FARO's most popular measurement system. Includes: Arm with Bluetooth wireless technology, base plate, standard probe kit (3mm and 6mm), rechargeable battery, cables, custom cover, heavy-duty case and 1 year standard warranty.

##### 7 Axis



12751-001: Platinum, 4 ft (1.2m), 7 Axis with Bluetooth

Platinum, 4 ft (1.2m), 7 Axis. FARO's most popular measurement system featuring 7 axis for added flexibility when using custom probes and Laser Line Scanners. Includes: Arm with Bluetooth wireless technology, base plate, standard probe kit (3mm and 6mm), rechargeable battery, cables, custom cover, heavy-duty case and 1 year standard warranty.

##### 6 Foot

##### 6 Axis



12750-002: Platinum, 6 ft (1.8m), 6 Axis with Bluetooth

Platinum, 6 ft (1.8m), 6 Axis. FARO's most popular measurement system. Includes: Arm with Bluetooth wireless technology, base plate, standard probe kit (3mm and 6mm), rechargeable battery, cables, custom cover, heavy-duty case and 1 year standard warranty.

##### 7 Axis



12751-002: Platinum, 6 ft (1.8m), 7 Axis with Bluetooth

Platinum, 6 ft (1.8m), 7 Axis. FARO's most popular measurement system featuring 7 axis for added flexibility when using custom probes and Laser Line Scanners. Includes: Arm with Bluetooth wireless technology, base plate, standard probe kit (3mm and 6mm), rechargeable battery, cables, custom cover, heavy-duty case and 1 year standard warranty.

##### 8 Foot

##### 6 Axis



12750-003: Platinum, 8 ft (2.4m), 6 Axis with Bluetooth

Platinum, 8 ft (2.4m), 6 Axis. FARO's most popular measurement system. Includes: Arm with Bluetooth wireless technology, base plate, standard probe kit (3mm and 6mm), rechargeable battery, cables, custom cover, heavy-duty case and 1 year standard warranty.

##### 7 Axis



12751-003: Platinum, 8 ft (2.4m), 7 Axis with Bluetooth

Platinum, 8 ft (2.4m), 7 Axis. FARO's most popular measurement system featuring 7 axis for added flexibility when using custom probes and Laser Line Scanners. Includes: Arm with Bluetooth wireless technology, base plate, standard probe kit (3mm and 6mm), rechargeable battery, cables, custom cover, heavy-duty case and 1 year standard warranty.

## 10 Foot

### 6 Axis



12750-004: Platinum, 10 ft (3.0m), 6 Axis with Bluetooth

Platinum, 10 ft (3.0m), 6 Axis. FARO's most popular measurement system. Includes: Arm with Bluetooth wireless technology, base plate, standard probe kit (3mm and 6mm), rechargeable battery, cables, custom cover, heavy-duty case and 1 year standard warranty.

### 7 Axis



12751-004: Platinum, 10 ft (3.0m), 7 Axis with Bluetooth

Platinum, 10 ft (3.0m), 7 Axis. FARO's most popular measurement system featuring 7 axis for added flexibility when using custom probes and Laser Line Scanners. Includes: Arm with Bluetooth wireless technology, base plate, standard probe kit (3mm and 6mm), rechargeable battery, cables, custom cover, heavy-duty case and 1 year standard warranty.

## 12 Foot

### 6 Axis



12750-005: Platinum, 12 ft (3.7m), 6 Axis with Bluetooth

Platinum, 12 ft (3.7m), 6 Axis. FARO's most popular measurement system. Includes: Arm with Bluetooth wireless technology, base plate, standard probe kit (3mm and 6mm), rechargeable battery, cables, custom cover, heavy-duty case and 1 year standard warranty.

### 7 Axis



12751-005: Platinum, 12 ft (3.7m), 7 Axis with Bluetooth

Platinum, 12 ft (3.7m), 7 Axis. FARO's most popular measurement system featuring 7 axis for added flexibility when using custom probes and Laser Line Scanners. Includes: Arm with Bluetooth wireless technology, base plate, standard probe kit (3mm and 6mm), rechargeable battery, cables, custom cover, heavy-duty case and 1 year standard warranty.

## Fusion

### 6 Foot

#### 6 Axis



12747-002: Fusion 6 ft (1.8m), 6 Axis with Bluetooth

Fusion 6 ft (1.8m), 6 Axis with Bluetooth. FARO's affordable performance measurement system. Includes: Arm with Bluetooth wireless technology, base plate, standard probe kit (3mm and 6mm), cables, battery, custom cover, heavy-duty case and 1 year standard warranty.

#### 7 Axis



12748-002: Fusion 6 ft (1.8m), 7 Axis with Bluetooth

Fusion 6 ft (1.8m), 7 Axis with Bluetooth. FARO's affordable performance measurement system featuring 7 axis for added flexibility when using custom probes and Laser Line Scanners. Includes: Arm with Bluetooth wireless technology, base plate, standard probe kit (3mm and 6mm), cables, battery, custom cover, heavy-duty case and 1 year standard warranty.

### 8 Foot

#### 6 Axis



12747-003: Fusion 8 ft (2.4m), 6 Axis with Bluetooth

Fusion 8 ft (2.4m), 6 Axis with Bluetooth. FARO's affordable performance measurement system. Includes: Arm with Bluetooth wireless technology, base plate, standard probe kit (3mm and 6mm), cables, battery, custom cover, heavy-duty case and 1 year standard warranty.

## 7 Axis



12748-003: Fusion 8 ft (2.4m), 7 Axis with Bluetooth

Fusion 8 ft (2.4m), 7 Axis with Bluetooth. FARO's affordable performance measurement system featuring 7 axis for added flexibility when using custom probes and Laser Line Scanners. Includes: Arm with Bluetooth wireless technology, base plate, standard probe kit (3mm and 6mm), cables, battery, custom cover, heavy-duty case and 1 year standard warranty.

## 10 Foot

### 6 Axis



12747-004: Fusion 10 ft (3.0m), 6 Axis with Bluetooth

Fusion 10 ft (3.0m), 6 Axis with Bluetooth. FARO's affordable performance measurement system. Includes: Arm with Bluetooth wireless technology, base plate, standard probe kit (3mm and 6mm), cables, battery, custom cover, heavy-duty case and 1 year standard warranty.

## 7 Axis



12748-004: Fusion 10 ft (3.0m), 7 Axis with Bluetooth

Fusion 10 ft (3.0m), 7 Axis with Bluetooth. FARO's affordable performance measurement system featuring 7 axis for added flexibility when using custom probes and Laser Line Scanners. Includes: Arm with Bluetooth wireless technology, base plate, standard probe kit (3mm and 6mm), cables, battery, custom cover, heavy-duty case and 1 year standard warranty.

## 12 Foot

### 6 Axis



12747-005: Fusion 12 ft (3.7m), 6 Axis with Bluetooth

Fusion 12 ft (3.7m), 6 Axis with Bluetooth. FARO's affordable performance measurement system. Includes: Arm with Bluetooth wireless technology, base plate, standard probe kit (3mm and 6mm), cables, battery, custom cover, heavy-duty case and 1 year standard warranty.

## 7 Axis



12748-005: Fusion 12 ft (3.7m), 7 Axis with Bluetooth

Fusion 12 ft (3.7m), 7 Axis with Bluetooth. FARO's affordable performance measurement system featuring 7 axis for added flexibility when using custom probes and Laser Line Scanners. Includes: Arm with Bluetooth wireless technology, base plate, standard probe kit (3mm and 6mm), cables, battery, custom cover, heavy-duty case and 1 year standard warranty.

## Quantum

### 6 Foot

### 6 Axis



11288-002: Quantum, 6 ft (1.8m), 6 Axis

Quantum, 6 ft (1.8m), 6 Axis. FARO's premium measurement system featuring the highest accuracy and Bluetooth wireless technology. Includes: Arm, base plate, standard i-probe kit (3mm, 6mm and TP-20 adapter), rechargeable battery, cables, custom cover, heavy-duty case and 2 year standard warranty.

## 7 Axis



11289-002: Quantum, 6 ft (1.8m), 7 Axis

Quantum, 6 ft (1.8m), 7 Axis. FARO's premium measurement system featuring the highest accuracy, Bluetooth wireless technology and 7 axis for added flexibility. Includes: Arm, base plate, standard i-probe kit (3mm, 6mm and TP-20 adapter), rechargeable battery, cables, custom cover, heavy-duty case and 2 year standard warranty.

## 8 Foot

### 6 Axis



11288-003: Quantum, 8 ft (2.4m), 6 Axis

Quantum, 8 ft (2.4m), 6 Axis. FARO's premium measurement system featuring the highest accuracy and Bluetooth wireless technology. Includes: Arm, base plate, standard i-probe kit (3mm, 6mm and TP-20 adapter), rechargeable battery, cables, custom cover, heavy-duty case and 2 year standard warranty.

### 7 Axis



11289-003: Quantum, 8 ft (2.4m), 7 Axis

Quantum, 8 ft (2.4m), 7 Axis. FARO's premium measurement system featuring the highest accuracy, Bluetooth wireless technology and 7 axis for added flexibility. Includes: Arm, base plate, standard i-probe kit (3mm, 6mm and TP-20 adapter), rechargeable battery, cables, custom cover, heavy-duty case and 2 year standard warranty.

## 10 Foot

### 6 Axis



11288-004: Quantum, 10 ft (3.0m), 6 Axis

Quantum, 10 ft (3.0m), 6 Axis. FARO's premium measurement system featuring the highest accuracy and Bluetooth wireless technology. Includes: Arm, base plate, standard i-probe kit (3mm, 6mm and TP-20 adapter), rechargeable battery, cables, custom cover, heavy-duty case and 2 year standard warranty.

### 7 Axis



11289-004: Quantum, 10 ft (3.0m), 7 Axis

Quantum, 10 ft (3.0m), 7 Axis. FARO's premium measurement system featuring the highest accuracy, Bluetooth wireless technology and 7 axis for added flexibility. Includes: Arm, base plate, standard i-probe kit (3mm, 6mm and TP-20 adapter), rechargeable battery, cables, custom cover, heavy-duty case and 2 year standard warranty.

## 12 Foot

### 6 Axis



11288-005: Quantum, 12 ft (3.7m), 6 Axis

Quantum, 12 ft (3.7m), 6 Axis. FARO's premium measurement system featuring the highest accuracy and Bluetooth wireless technology. Includes: Arm, base plate, standard i-probe kit (3mm, 6mm and TP-20 adapter), rechargeable battery, cables, custom cover, heavy-duty case and 2 year standard warranty.

### 7 Axis



11289-005: Quantum, 12 ft (3.7m), 7 Axis

Quantum, 12 ft (3.7m), 7 Axis. FARO's premium measurement system featuring the highest accuracy, Bluetooth wireless technology and 7 axis for added flexibility. Includes: Arm, base plate, standard i-probe kit (3mm, 6mm and TP-20 adapter), rechargeable battery, cables, custom cover, heavy-duty case and 2 year standard warranty.

## Accessories

### Probes

#### Metric Ball Probes



##### 10359: Ball Probe - 1mm, Ruby

1mm Ruby Ball Probe with Tungsten Carbide Shaft-USB. For use with Platinum, Titanium, Advantage and GAGE arms. This product comes in three pieces: Tungsten carbide shaft and ruby ball styli with M2 threads, a stainless steel M5 to M2 threaded adaptor, and an aluminum M5 to 1 1/4"-20 adaptor. The pieces thread together easily to form the finished probe. NOTE: The shaft diameter is 0.7mm and is therefore, delicate. Care must be taken when using it in order to prevent snapping the shaft in two or to avoid excessive flexing which could affect the accuracy of the results. It is recommended that the probe be calibrated using the sphere method.



##### 10420: 4mm Zirconia Ball Probe

4mm Zirconia Ball Probe. Zirconia ball probe with M6 thread. Requires 2712 Probe Adapter for use with Platinum, Titanium, Advantage and GAGE arms. (Sold separately.)



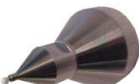
##### 10421: 5mm Zirconia Ball Probe

5mm Zirconia Ball Probe. Zirconia ball probe with M6 thread. Requires 2712 Probe Adapter for use with Platinum, Titanium, Advantage and GAGE arms. (Sold separately.)



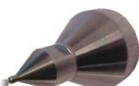
##### 11738: 6mm Zirconia Ball i-Probe

6mm Zirconia Ball i-Probe for use with Quantum FaroArm. Built-in electronics monitor probe temperature, store serial number and certified ball diameter.



##### 11740: 3mm Zirconia Ball i-Probe

3mm Zirconia Ball i-Probe for use with Quantum FaroArm. Built-in electronics monitor probe temperature, store serial number and certified ball diameter.



##### 12453: 3mm Zirconia Ball Probe-USB

3mm Zirconia Ball Probe-USB. Zirconia ball probe for use with Platinum, Titanium, Advantage and GAGE arms. Replaces part number PROBE0069.



##### 12454: 6mm Zirconia Ball Probe-USB

6mm Zirconia Ball Probe-USB. Zirconia ball probe for use with Platinum, Titanium, Advantage and GAGE arms. Replaces part number PROBE0070.



##### 12550: 20mm Zirconia Ball i-Probe

20mm Zirconia Ball i-Probe for use with Quantum FaroArm. Built-in electronics monitor probe temperature, store serial number and certified ball diameter.



**PROBE0034: 8mm Ball Probe**

8mm Ball Probe. Steel ball Probe with M6 thread. Requires 2712 Probe Adapter for use with Platinum, Titanium, Advantage and GAGE arms. (Sold separately.)



**PROBE0035: 10mm Ball Probe**

10mm Ball Probe. Steel ball Probe with M6 thread. Requires 2712 Probe Adapter for use with Platinum, Titanium, Advantage and GAGE arms. (Sold separately.)



**PROBE0036: 12mm Ball Probe**

12mm Ball Probe. Steel ball Probe with M6 thread. Requires 2712 Probe Adapter for use with Platinum, Titanium, Advantage and GAGE arms. (Sold separately.)



**PROBE0037: 16mm Ball Probe**

16mm Ball Probe. Steel ball Probe with M6 thread. Requires 2712 Probe Adapter for use with Platinum, Titanium, Advantage and GAGE arms. (Sold separately.)



**PROBE0038: 20mm Ball Probe**

20mm Ball Probe. Steel ball Probe with M6 thread. Requires 2712 Probe Adapter for use with Platinum, Titanium, Advantage and GAGE arms. (Sold separately.)



**PROBE0039: 18mm Ball Probe**

18mm Ball Probe. Steel ball Probe with M6 thread. Requires 2712 Probe Adapter for use with Platinum, Titanium, Advantage and GAGE arms. (Sold separately.)



**PROBE0060: 3mm-90deg. Ruby ball probe**

3mm-90deg. Ruby ball probe. Ruby ball probe with 50mm extension, 90deg. Angle and M6 thread. Designed to capture dimensional data in places too small for a probe extension. Total width including shaft and probe is 12 mm. Requires 2712 Probe Adapter for use with Platinum, Titanium, Advantage and GAGE arms. (Sold separately.)



**PROBE0065: 3mm Zirconia Ball Probe**

3mm Zirconia Ball Probe. Zirconia ball probe with M6 thread. Requires 2712 Probe Adapter for use with Platinum, Titanium, Advantage and GAGE arms. (Sold separately.)



**PROBE0067: 6mm Zirconia Ball Probe**

6mm Zirconia Ball Probe. Zirconia ball probe with M6 thread. Requires 2712 Probe Adapter for use with Platinum, Titanium, Advantage and GAGE arms. (Sold separately.)



**PROBE0089: 2mm Zirconia Probe-USB**

2mm Zirconia Ball Probe-USB. Zirconia ball probe for use with Platinum, Titanium, Advantage and GAGE arms.

## English Ball Probes



10533: 1/16" Ball Probe

1/16" Ball Probe. Ruby ball Probe with M6 thread. Requires 2712 Probe Adapter for use with Platinum, Titanium, Advantage and GAGE arms. (Sold separately.)



PROBE0021: 1/4" Extended Ball Probe

1/4" Extended Ball Probe. Steel ball probe with a 4" extension and M6 thread. Requires 2712 Probe Adapter for use with Platinum, Titanium, Advantage and GAGE arms. (sold separately.)



PROBE0022: 1/2" Ball Probe

1/2" Ball Probe. Steel ball Probe with M6 thread. Requires 2712 Probe Adapter for use with Platinum, Titanium, Advantage and GAGE arms. (Sold separately.)



PROBE0025: 1/4" Curved Ball Probe

1/4" Curved Ball Probe. Steel ball probe with 60deg. curved shaft and M6 thread. Ideal for measurement in tight areas. Requires 2712 Probe Adapter for use with Platinum, Titanium, Advantage and GAGE arms. (Sold separately.)



PROBE0028: 1/16" Ball Probe

For Non-USB series FaroArms. Probe with 1/16" sphere diameter and an M6 thread. Stainless Steel 303 tip. Must be used with a 2712 adaptor (sold separately) for USB series arms.



PROBE0029: 1" Ball Probe

1" Ball Probe. Steel ball Probe with M6 thread. Requires 2712 Probe Adapter for use with Platinum, Titanium, Advantage and GAGE arms. (Sold separately.)



PROBE0045: 1/64" Radius Probe

1/64" Radius Probe. Carbide steel tip probe with 1/64" radius and M6 thread. Requires 2712 Probe Adapter for use with Platinum, Titanium, Advantage and GAGE arms. (Sold separately.)



PROBE0051: 1/8" Extended Ball Probe

1/8" Extended Ball Probe. Steel ball probe with 4" extension and M6 thread. Requires 2712 Probe Adapter for use with Platinum, Titanium, Advantage and GAGE arms. (Sold separately.)



PROBE0066: 1/8" Zirconia Ball Probe

1/8" Zirconia Ball Probe. Zirconia ball probe with M6 thread. Requires 2712 Probe Adapter for use with Platinum, Titanium, Advantage and GAGE arms. (Sold separately.)





PROBE0068: 1/4" Zirconia Ball Probe

1/4" Zirconia Ball Probe. Zirconia ball probe with M6 thread. Requires 2712 Probe Adapter for use with Platinum, Titanium, Advantage and GAGE arms. (Sold separately.)



PROBE0083: 5/16" Zirconia Ball Probe

5/16" Zirconia Ball Probe. Zirconia ball probe for use with Platinum, Titanium, Advantage and GAGE arms.

## Point Probes



PROBE0020: Carbide Point Probe

A probe with a carbide steel point. This probe requires no compensation of the measured points. NOTE: This probe requires the use of an adapter (FARO p/n 2712) to work with USB series Gages and Arms.



PROBE0041: 60deg. Point Probe

60deg. Point Probe. Carbide steel point probe with 4" extension, 60deg. bend and M6 thread. Requires 2712 Probe Adapter for use with Platinum, Titanium, Advantage and GAGE arms. (Sold separately.)



PROBE0042: 5" Extended Point Probe

5" Extended Point Probe. Carbide steel point probe with 5" extension and M6 thread. Requires 2712 Probe Adapter for use with Platinum, Titanium, Advantage and GAGE arms. (Sold separately.)



PROBE0046: 4" Long Carbide Point Probe

4" Long Carbide Point Probe. Carbide steel point probe with 4" extension and M6 thread. Requires 2712 Probe Adapter for use with Platinum, Titanium, Advantage and GAGE arms. (Sold separately.)



PROBE0071: Point Probe-USB

Point Probe-USB. Tungsten Carbide steel point probe for use with Platinum, Titanium, Advantage and GAGE arms. NOTE: Caution must be used when handling. Tungsten carbide is hard (9 on Moh's scale), scratch resistant and heat resistant but brittle and the tips may break if not handled with care.

## Adaptors and Specialty Probes



11713: i-Probe to TP-20 Adapter

Adapter to use a Renishaw TP-20 touch trigger probe with any Quantum FaroArm.



12393: English and Metric Adapter Kit

Probe thread adapter for English arm threads to metric probe threads and metric arm threads to English probe threads. Allows the older style probe shanks to fit metric style arms. Not for USB arms.



**1835: 1/2" Cone Probe**

1/2" Cone Probe. Conical socket probe designed for quick measurement of 1/2in tooling spheres. Requires 2712 Probe Adapter for use with Platinum, Titanium, Advantage and GAGE arms. (Sold separately.)



**2712: Probe Adapter**

2712 Probe Adapter. Probe adapter to use M6 thread probes with USB arms 1.25-20 thread. (Platinum, Titanium, Advantage and GAGE arms).



**PROBE0030: 1/8" Delrin Ball Probe**

1/8" Delrin Ball Probe. Delrin ball probe with M6 thread. Low friction plastic ball tip to minimize marring. Requires 2712 Probe Adapter for use with Platinum, Titanium, Advantage and GAGE arms. (Sold separately.)



**PROBE0032: 1/4" Delrin Ball Probe**

1/4" Delrin Ball Probe. Delrin ball probe with M6 thread. Low friction plastic ball tip to minimize marring. Requires 2712 Probe Adapter for use with Platinum, Titanium, Advantage and GAGE arms. (Sold separately.)



**PROBE0043: Delrin Point Probe**

Delrin Point Probe. Delrin point probe with M6 thread. Low friction plastic tip to minimize marring. Requires 2712 Probe Adapter for use with Platinum, Titanium, Advantage and GAGE arms. (Sold separately.)



**PROBE0044: 1/2" Swiveling Edge Probe**

1/2" Swiveling Edge Probe. Steel ball Probe with M6 thread. 1/2" ball tip with 120deg. cut-out allows probe to "ride" along edges for quick measurements. Requires 2712 Probe Adapter for use with Platinum, Titanium, Advantage and GAGE arms. (Sold separately.)



**PROBE0047: Pen Holder Probe**

Pen Holder Probe. Pen holder probe with felt-tip pen and M6 thread. Use for making accurate reference markings. Requires 2712 Probe Adapter for use with Platinum, Titanium, Advantage and GAGE arms. (Sold separately.)



**PROBE0049: Center Punch Probe**

Center Punch Probe. Spring loaded center punch probe with M6 thread. Use for making accurate reference markings. Requires 2712 Probe Adapter for use with Platinum, Titanium, Advantage and GAGE arms. (Sold separately.)



**PROBE0052: 1/8"-60deg. Delrin Ball Probe**

1/8"-60deg. Delrin Ball Probe. Delrin ball probe with 2" extension, 60 deg. bend and M6 thread. Low friction plastic ball tip to minimize marring. Requires 2712 Probe Adapter for use with Platinum, Titanium, Advantage and GAGE arms. (Sold separately.)



## XH15-0089: Disc Probe

Disc Probe. 1/4" steel ball probe with magnetized disc and M6 thread. Attach disc to increased surface area, reduce pressure and deflection on soft parts like foam or rubber. Requires 2712 Probe Adapter for use with Platinum, Titanium, Advantage and GAGE arms. (Sold separately.)

## Laser Probes



## 10202: FARO Laser Line Probe V2

FARO Laser Line Probe V2. The FARO Laser Line Probe is ideal for non-contact measurement applications, inspection and reverse engineering. For use with 7 Axis USB FaroArms. Includes: Laser Line Probe, calibration kit, case and 1 year standard warranty.



## 11669: Laser Line Probe V3

Laser Line Probe V3 is FARO's smallest, lightest and most accurate laser scanning probe. Ideal for non-contact measurement applications, inspection and reverse engineering. For use with 7 Axis USB FaroArms. Includes: Laser Line Probe, calibration kit, case and 1 year standard warranty.



## 11669-DEMO: Laser Line Probe V3

Laser Line Probe V3 is FARO's smallest, lightest and most accurate laser scanning probe. Ideal for non-contact measurement applications, inspection and reverse engineering. For use with 7 Axis USB FaroArms. Includes: Laser Line Probe, calibration kit, case and 1 year standard warranty.

## Probe Kits and Extensions



NO PICTURE AVAILABLE

## 11769: Renishaw Basic Touch Probe kit.

Renishaw Basic Touch Probe kit features one repeatable magnetic probe interface , 2mm and 6mm stylii and carrying case. For use with Quantum Arm or existing USB arms with available option port.



## 12637: FARO SENSOR

FARO SENSOR is contact-sensing rigid probe that incorporates ground breaking technology to provide hard probe, touch trigger and scanning capability. Exclusive for Quantum FaroArm. Includes one 6mm and one 3mm stylus, wrench, stylus tool, cleaning kit and carrying case. Limited 1 year warranty.



## KIT0007: Ball Probe Kit with Case

Ball Probe Kit with Case. A kit of 3, 6, 8, 10, 12, 16, 18, and 20mm steel-hardened ball probes and a custom storage box.



## PROBE0010: 4" straight probe extension

4" straight probe extension. 4" straight probe extension, M6x1 thread. Must use 2712 adaptor for USB arms (sold separately).



## PROBE0011: 12" Straight Probe Extension

12" Straight Probe Extension. A 12" straight threaded insert which increases the distance from the FaroArm handle to the probe end. Must be used with a 2712 adaptor (sold separately) for USB series arms.



**PROBE0072: Renishaw Touch Probe-USB Arm**

Renishaw Touch Probe-USB Arm. Designed exclusively for the Platinum, Titanium, Advantage and FaroGage, the touch probe features two repeatable magnetic probe interfaces, 2mm, 3mm, and 6mm probes, and carrying case.



**PROBE0073: Probe Extension Kit-USB Arm**

Probe Extension Kit-USB Arm. Specifically for the Platinum, Titanium, Advantage and FaroGage, this probe extensions kit contains 2-3" straight, 1-4" straight, 1-60 degree angle, and 1-90 degree angle probe extensions, as well as 1-3mm Zirconia and 1-6mm Zirconia probes. Not intended for high accuracy applications or for use with new series probes.



**PROBE0074: 3" straight probe extension**

3" straight probe extension. A 3" straight threaded insert which increases the distance from the FaroArm handle to the probe end. Must be used with a 2712 adaptor (sold separately) for USB series arms.



**PROBE0076: Touch Probe with Extension Kit-USB Arm**

Touch Probe with Extension Kit-USB Arm. Touch Probe Extension kit designed exclusively for the Platinum, Titanium, Advantage and FaroGage combines the touch probe with two repeatable magnetic probe interfaces, 2mm, 3mm, and 6mm ball probes, a 50 mm extension, a 200mm extension, a variable offset angle joint and carrying case.

## Mounts

### Base Plates and Mounts



**1001-1078: Vacuum Mount**

Vacuum Mount. Vacuum mount designed for every size and model of USB FaroArms and Faro Laser Tracker. Quickly, easily and rigidly mounts the FaroArm or Tracker to granite surfaces without a degradation in accuracy. Includes mount, hand pump, oil and case. Dimensions: Diameter=10.75" (273mm), Height=1.75" (44.4mm).



**10231: Arm Base Plate**

Arm Base Plate. Standard Base plate for Platinum, Titanium and FaroGage. Includes 3.5" mounting ring and bolt holes for permanent mounting. Dimensions: Diameter=5.95" (151mm), Height=1" (25.4mm).



**10607: Mounting Plate for Serial Arms**

Mounting Plate to be used with serial FAROArms.



**11516: Magnetic Mount Kit (150mm)**

A magnetic mount kit that allows any FaroArm, Gage or Laser Tracker to be mounted to surface plates, tool beds and other ferrous surfaces. The part number consists of the following: (1) 150.0 mm diameter magmount, (1) hex wrench, (1) test certificate, (1) operating manual. Dimensions: Diameter=150mm (5.9" ), Height=76mm (2.3"). Weight: 7.5Kg (16.5lbs.)



**ACCS0185: Control Station Base Plate**

Control Station Base Plate. Features dual mount for the FaroArm and Computer support arm. Mount directly on a 3.5" threaded mount or surface plate. USB and Serial Arms Only. Dimensions: LxWxH=11.2x5.9x1.2in (285x151x31mm).





ACCS0189: T-slot mount

T-slot mount. Mount your FaroArm to a machining center's existing T-slots. Multi-configuration holes accept all standard T-slot bolts. Dimensions: Diameter=6.125" (155mm), Height=1" (25.4mm).



ACCS0213: Laptop Support Arm

Laptop Support Arm. Supports a variety of wide format notebook computers with multi-position and rotation, height adjustable ease. Comes with an external clamp mount or mounts directly to the Control Station base plate (ACCS0185 sold separately) Dimensions: Tray LxW=17x10 in (43.2x25.4 cm); Support Arm Vertical Range=14" (35.5cm), Horizontal Range=24" (61cm).



KIT0006: Magnetic Mount Kit with Riser

Magnetic Mount Kit with Riser. Magnetic mounting kit combined with a 20" (50.8cm) riser for convenient mounting of the FARO Laser Trackers and all USB FaroArms. Includes a heavy-duty carrying case. [KIT0006]

## Stands and Tripods



ACCS0134: Portable Folding Tripod

Designed specifically for the FaroArm, the folding tripod includes patented stabilizing struts that mount to the actual work surface, retractable wheels, base plate mount for FaroArm and laptop support, and heavy-duty case (Laptop support sold separately). Dimensions: Height 25" to 41" (0.6m to 1.0m), maximum spread 61" (1.5m).



IG-10: Rolling Stand 28"-42"

Rolling Stand 28"-42". Specifically designed for all FARO USB Arms and Laser Tracker products, this heavy-duty stand is built for maximum portability and stability. Includes 3.5" ring mount, retractable wheels, adjustable height. Dimensions: Max base width=32.5" (82.5cm); Height 28" to 42" (71.1 to 106.1cm).



IG-18: Rolling Stand 20"-25"

Rolling Stand 20"-25". Specifically designed for all FARO USB Arms and Laser Tracker products, this heavy-duty stand is built for maximum portability and stability. Includes 3.5" ring mount, retractable wheels, adjustable height. Dimensions: Max base width=32.5" (82.5cm); Height 20" to 25" (50.8 to 63.5cm).



IG-24: Rolling Stand 36"-54"

Rolling Stand 36"-54". Specifically designed for all FARO USB Arms and Laser Tracker products, this heavy-duty stand is built for maximum portability and stability. Includes 3.5" ring mount, retractable wheels, adjustable height. Dimensions: Max base width=32.5" (82.5cm); Height 36" to 54" (91.4 to 137.1cm).



IG-9: Rolling Stand 43"-67"

Rolling Stand 43"-67". Specifically designed for all FARO USB Arms and Laser Tracker products, this heavy-duty stand is built for maximum portability and stability. Includes 3.5" ring mount, retractable wheels, adjustable height. Dimensions: Max base width=32.5" (82.5cm); Height 43" to 67" (109.2 to 170.1cm).

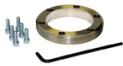
## Carts and Work Tables



### ACCS0164: Granite Rolling Cart

Granite Rolling Cart. Complete mobile measurement workstation. Provides a solid work surface for all USB Series FaroArms. Includes granite surface plate with toe clamp inserts, two integrated FaroArm mounts, locking heavy duty casters, locking cabinet doors and a 52 piece toe clamp set. Dimensions: LxWxH= 36x24x35in (89x63x91cm). Additional shipping charges apply. Recommended for high precision measurements.

## Adapters and Risers



### IG-27: 3.5" Mounting Ring

3.5" Mounting Ring. Standard 3.5" ring, threaded to accept any FARO USB Arm or Laser Tracker. Can be mounted to any flat surface with the supplied bolts and hex key. Also supports older Sterling and the Bronze Series FaroArm.



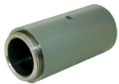
### IG-5: Serial Arm Adaptor Plate

Serial Arm Adaptor Plate. This adaptor plate is designed to mount a Silver or Gold Series FaroArm to the standard 3 1/2" mounting ring. Can be used with rolling stands, magnetic and vacuum mounts.



### XH14-0139: Stand Extension 3"

Stand Extension 3". Riser used to increase the height any rolling stand, tripod, magnetic mount or surface plate mount. Length: 3" (76.2mm).



### XH14-0140: Stand Extension 5"

Stand Extension 5". Riser used to increase the height any rolling stand, tripod, magnetic mount or surface plate mount. Length: 5" (127mm).



### XH14-0141: Stand Extension 10"

Stand Extension 10". Riser used to increase the height any rolling stand, tripod, magnetic mount or surface plate mount. Length: 10" (254mm).



### XH14-0153: Stand Extension 20"

Stand Extension 20". Riser used to increase the height any rolling stand, tripod, magnetic mount or surface plate mount. Length: 20" (50.8cm).



### XH14-0166: Stand Extension 200mm

Stand Extension 200mm. Riser used to increase the height any rolling stand, tripod, magnetic mount or surface plate mount. Length: 200mm (7.8").



### XH14-0167: Stand Extension 400mm

Stand Extension 400mm. Riser used to increase the height any rolling stand, tripod, magnetic mount or surface plate mount. Length: 400mm (15.7").



XH14-0168: Stand Extension 600mm

Stand Extension 600mm. Riser used to increase the height any rolling stand, tripod, magnetic mount or surface plate mount. Length: 600mm (23.6").

## Computers Systems



COMP0101: Notebook-Standard

Standard notebook computer for use with FaroArm and Laser Tracker systems. Contact your FARO representative for current specifications.



COMP0104: Notebook-Ruggedized

Notebook-Ruggedized. Ruggedized, touch-screen notebook computer option combines portability and shop-floor durability. Use with FaroArm, Laser Tracker and Gage Systems. Contact your FARO representative for current specifications.



COMP0106: Desktop-Power User

Desktop-Power User. High-end desktop computer option for user who prefer a workstation. Use with FaroArm, ScanArm, Laser Tracker and Laser Scanner systems. Contact your FARO representative for current specifications.



COMP0115: Notebook-Power User

Notebook-Power User. Power User high-end notebook computer for use with ScanArm and Laser Scanner systems. Optional upgrade for FaroArm and Laser Tracker systems. Contact your FARO representative for current specifications.



COMP0115-x64: Notebook-Power User, 64bit Vista

Notebook-Power User. Power User high-end notebook computer with Windows Vista 64bit operating system for use with ScanArm and Laser Scanner systems. Optional upgrade for FaroArm and Laser Tracker systems. Contact your FARO representative for current specifications

## Other



NO PICTURE AVAILABLE

I2-09: Legacy Gold Arm Extension Cable

I2-09 Extension Cable for legacy Gold Arm. This is a special order legacy cable and is not stocked.

## Cases



10454: Four Foot Arm HD Case (Platinum & Fusion)

Four Foot Arm HD Case. Heavy duty shipping case for all 4 foot USB series FaroArms and Digital Templates. (Platinum and Fusion)



10455: Six Foot Arm HD Case (Platinum & Fusion)

Six Foot Arm HD Case. Heavy duty shipping case for all 6 foot USB series FaroArms and Digital Templates. (Platinum and Fusion)



10456: Eight Foot Arm HD Case (Platinum & Fusion)

Eight Foot Arm HD Case. Heavy duty shipping case for all 8 foot USB series FaroArms and Digital Templates. (Platinum and Fusion)



10457: Ten Foot Arm HD Case (Platinum & Fusion)

Ten Foot Arm HD Case. Heavy duty shipping case for all 10 foot USB series FaroArms and Digital Templates. (Platinum and Fusion)



10458: Twelve Foot Arm HD Case (Platinum & Fusion)

Twelve Foot Arm HD Case. Heavy duty shipping case for all 12 foot USB series FaroArms and Digital Templates. (Platinum and Fusion)



11609: Eight Foot Arm HD Case (Quantum)

Eight Foot Arm HD Case. Heavy duty shipping case for all 8 foot USB series FaroArms and Digital Templates. (Quantum)



12107: Six Foot Arm HD Case (Quantum)

Six Foot Arm HD Case. Heavy duty shipping case for all 6 foot USB series FaroArms and Digital Templates. (Quantum)



12108: Ten Foot Arm HD Case (Quantum)

Ten Foot Arm HD Case. Heavy duty shipping case for all 10 foot USB series FaroArms and Digital Templates. (Quantum)



12109: Twelve Foot ARM HD Case (Quantum)

Twelve Foot Arm HD Case. Heavy duty shipping case for all 12 foot USB series FaroArms and Digital Templates. (Quantum)



XH14-0131: Probe Case

Probe Case. A portable case for storage of FaroArm probes.

## Tooling



10308: Probe Calibration Cone

Probe Calibration Cone. Remote probe calibration cone. Used for Platinum, Titanium, and FaroGage for probe calibration and for older series arms for single point accuracy tests.



## Accessories --> Other --> Tooling



### 11739: 12mm Break-Away Torque Wrench

12mm open torque wrench pre-set to 50in/lb for tightening probes. Break-Away design ensures consistent force applied when installing FaroArm probes.



### 2766: Probe Calibration Sphere

Probe Calibration Sphere. Remote probe calibration sphere. Used for Platinum, Titanium, and FaroGage calibration of touch probes or point probes.



### ACCS0026: Magnetic Cone Tip

Magnetic Cone Tip. A single tooling cone with an adjustable magnetic base.



### ACCS0027: Stationary Cone

Stationary Cone. Cone to be permanently mounted to tools and fixtures for use in alignment.



### ACCS0039: Magnetic Cones Set (3)

Magnetic Cones Set (3). A set of three separate cone tips which are used during the leapfrog command. This will increase the measuring volume of the FaroArm (not for high accuracy applications).



### ACCS0078: Magnetic Spheres Set (3)

Magnetic Spheres Set (3). A set of three separate tooling spheres which are used for the Leapfrog command. This will increase the measuring volume of the FaroArm. Not recommended for high accuracy applications.



### IG-1: Leapfrog Jig

Leapfrog Jig. A set of three tooling spheres mounted in a triangular shape on a single piece of steel. This jig is used with the leapfrog command which increases the measuring volume of the FaroArm (not for high accuracy applications).



### XH15-12: 1" Calibration Sphere for Serial Arms

1" replacement calibration sphere for Serial Arms (Gold, Silver, Bronze).

## Cables, Cords and Batteries



### 1456: FaroArm Com Cable, Silver

Connects Silver, Gold, Sterling and Bronze FaroArm to Power Module (DSP models only).



### 225-90-005: Uninterruptible Power Supply (UPS)

Uninterruptible Power Supply (UPS). Conditions incoming power. 1400 VA, sine waves output, 6 x 115 VAC receptacles. For US and 115 VAC countries only.



**299-01030: Uninterruptible Power Supply (UPS)**

Uninterruptible Power Supply (UPS). Conditions incoming power. 1500 VA, Input 230V/Output 230V. For Europe and other 230 VAC countries only.



**ACCS0146: USB Arm Battery & Charger**

USB arm bat & charger. Faro all USB FaroArm series. Includes extra battery and external charger.



**ACCS0219: External Battery**

External Battery. Power your FaroArm for 4 times as long as the onboard battery with this external rechargeable battery pack.



**SLVR0085-01: Power supply for Gold Arm**

Power supply for Gold Arm. [SLVR0085-01]



**XH11-0153: Extension Cord, United States**

Extension Cord, United States. 25 ft cord extension power cord (US).



**XH11-0207: USB Cable 16 ft**

USB Cable 16 ft. Faro approved, shielded 16 foot USB cable for connecting USB series FaroArms to the host computer.



**xh11-103: Power Cord - USB Arm**

Power Cord - USB Arm. 8 feet long. For USB Arms, must be used with Power Brick (XH13-1447) sold separately.



**XH11-87: 10 foot Communication Cable**

10 foot null modem cable connects the FaroArm's serial box or power brick to the computer for communications (not for Bronze series).



**XH13-1269: USB Extension Cable**

USB Extension Cable. Faro approved 16 Foot USB extension cable that extends your existing Faro USB cable an additional 16 feet.



**XH13-1369: FaroArm Battery**

FaroArm Battery. Lithium Ion battery for all USB series arms.



**XH13-1447: USB arm power brick**

USB arm power brick. Power brick for USB arm, uses standard computer type power cord (xh11-103) sold separately.



XH15-0159: Surge Suppressor (US)

Surge Suppressor (US). US spec power surge suppressor.

## Covers



2122: Dust Cover USB 4 foot

Dust Cover USB 4 foot. Cover for 4 foot USB Arms.



2148: Dust Cover USB 6 foot

Dust Cover USB 6 foot. Cover for 6 foot USB Arms.



2149: Dust Cover USB 8 foot

Dust Cover USB 8 foot. Cover for 8 foot USB Arms.



2150: Dust Cover USB 10 foot

Dust Cover USB 10 foot. Cover for 10 foot USB Arms.



2723: Dust Cover USB 12 foot

Dust Cover USB 12 foot. Cover for 12 foot USB Arms.

## Misc



11787: FARO Training Part with Fixture

The standard FARO part with fixture for secure mounting. This is a rugged, extruded aluminum base that comes with a fixture-mounted piece of stamped sheet metal for practicing with FARO hardware.



KIT0010: Standard Demo Part

Standard Demo Part. The demonstration part used in all FARO training classes and software tutorials. [KIT0010]



XH15-0127: Tripod Feet, Rubber, Set of 3

Tripod Feet, Rubber, Set of 3. Rubber feet which attach to FARO heavy-duty tripods to prevent slipping on smooth surfaces.



XH16-0488: USB Hub

USB Hub. USB Hub for external devices like printers.

# FARO Product Catalog



FaroArm

English - US



[Accessories -->](#) [Other -->](#) [Misc](#)



XH26-0030: Vacuum oil for Vac mount

Vacuum oil for Vac mount. Replacement vacuum oil for Vacuum mount. This oil is specifically formulated for Vacuum applications.



## Software

## Program



SOFT90001-F: PolyWorks/Modeler & Inspector™ + NURBS Surfacing Module (Float)

PolyWorks/Modeler & Inspector™ + NURBS Surfacing Module including IMAlign™, IMMerge™, IMEdit™, NURBS Surfacing Module, IMCompress™, IMInspect™, IGES and STEP (Float) Includes 1 year mandatory support/ maintenance contract . 1 mandatory dongle (hardware key - USB port). Optional FREE 5-day 'basic' training (STR90001) on PolyWorks/Modeler&Inspector package, at InnovMetric (Quebec City) for two trainees.



SOFT90001-N: PolyWorks/Modeler & Inspector™ + NURBS Surfacing Module (Node)

PolyWorks/Modeler & Inspector™ + NURBS Surfacing Module including IMAlign™, IMMerge™, IMEdit™, NURBS Surfacing Module, IMCompress™, IMInspect™, IGES and STEP (Node) Includes 1 year mandatory support/ maintenance contract . 1 mandatory dongle (hardware key - USB port). Optional FREE 5-day 'basic' training (STR90001) on PolyWorks/Modeler&Inspector package, at InnovMetric (Quebec City) for two trainees.



SOFT90002-F: PolyWorks/Modeler & Inspector™ (Float)

PolyWorks/Modeler & Inspector™ including IMAlign™, IMMerge™, IMEdit™, IMCompress™, IMInspect™, IGES and STEP (Float). Includes 1 year mandatory support/ maintenance contract . 1 mandatory dongle (hardware key - USB port). Optional FREE 5-day 'basic' training (STR90001) on PolyWorks/Modeler&Inspector package, at InnovMetric (Quebec City) for two trainees.



SOFT90002-N: PolyWorks/Modeler & Inspector™ (Node)

PolyWorks/Modeler & Inspector™ including IMAlign™, IMMerge™, IMEdit™, IMCompress™, IMInspect™, IGES and STEP (Node). Includes 1 year mandatory support/ maintenance contract . 1 mandatory dongle (hardware key - USB port). Optional FREE 5-day 'basic' training (STR90001) on PolyWorks/Modeler&Inspector package, at InnovMetric (Quebec City) for two trainees.



SOFT90003-F: PolyWorks/Modeler™ + NURBS Surfacing Module (Float)

PolyWorks/Modeler™ + NURBS Surfacing Module including IMAlign™, IMMerge™, IMEdit™, NURBS Surfacing Module, IMCompress™ (Float). Includes 1 year mandatory support/ maintenance contract . 1 mandatory dongle (hardware key - USB port). Optional FREE 3-day 'basic' training (STR90002) on PolyWorks/Modeler package, at InnovMetric (Quebec City). 'Classroom type' training at pre-determined dates. Up to TWO trainees.



SOFT90003-N: PolyWorks/Modeler™ + NURBS Surfacing Module (Node)

PolyWorks/Modeler™ + NURBS Surfacing Module including IMAlign™, IMMerge™, IMEdit™, NURBS Surfacing Module, IMCompress™ (Node). Includes 1 year mandatory support/ maintenance contract . 1 mandatory dongle (hardware key - USB port). Optional FREE 3-day 'basic' training (STR90002) on PolyWorks/Modeler package, at InnovMetric (Quebec City). 'Classroom type' training at pre-determined dates. Up to TWO trainees.



SOFT90004-F: PolyWorks/Modeler™ (Float)

PolyWorks/Modeler™ including IMAlign™, IMMerge™, IMEdit™, IMCompress™ (Float) Includes 1 year mandatory support/ maintenance contract . 1 mandatory dongle (hardware key - USB port). Optional FREE 3-day 'basic' training (STR90002) on PolyWorks/Modeler package, at InnovMetric (Quebec City). 'Classroom type' training at pre-determined dates. Up to TWO trainees.



## SOFT90004-N: PolyWorks/Modeler™ (Node)

PolyWorks/Modeler™ including IMAAlign™, IMMerge™, IMEdit™, IMCompress™ (Node) Includes 1 year mandatory support/ maintenance contract . 1 mandatory dongle (hardware key - USB port). Optional FREE 3-day 'basic' training (STR90002) on PolyWorks/Modeler package, at InnovMetric (Quebec City). 'Classroom type' training at pre-determined dates. Up to TWO trainees.



## SOFT90005-F: PolyWorks/Advanced Manufacturing Module (Float)

Optional module for 'PolyWorks/Modeler + NURBS Surfacing Module' licenses. \*Customer should already own or purchase a PWMN (SOFT90003) or PWMIN (SOFT90001) license. PWAM (SOFT90005) orders qualify for a 50% price reduction from 'list', until September 30th, 2009.



## SOFT90005-N: PolyWorks/Advanced Manufacturing Module (Node)

Optional module for 'PolyWorks/Modeler + NURBS Surfacing Module' licenses. \*Customer should already own or purchase a PWMN (SOFT90003) or PWMIN (SOFT90001) license. PWAM (SOFT90005) orders qualify for a 50% price reduction from 'list', until September 30th, 2009.



## SOFT90006-F: PolyWorks/Inspector with IMAAlign™ (Float)

PolyWorks/Inspector with IMAAlign™ (Float) including IMAAlign™, IMInspect™, IGES and STEP. Includes 1 year mandatory support/ maintenance contract . 1 mandatory dongle (hardware key - USB port). Optional FREE 3-day 'basic' training (STR90002) on PolyWorks/Inspector package, at InnovMetric (Quebec City). 'Classroom type' training at pre-determined dates. Up to TWO trainees.



## SOFT90006-N: PolyWorks/Inspector with IMAAlign™ (Node)

PolyWorks/Inspector with IMAAlign™ (Node) including IMAAlign™, IMInspect™, IGES and STEP. Includes 1 year mandatory support/ maintenance contract . 1 mandatory dongle (hardware key - USB port). Optional FREE 3-day 'basic' training (STR90002) on PolyWorks/Inspector package, at InnovMetric (Quebec City). 'Classroom type' training at pre-determined dates. Up to TWO trainees.



## SOFT90007-F: PolyWorks/Inspector™ (Float)

PolyWorks/Inspector™ (Float) including IMInspect™, IGES and STEP. Includes 1 year mandatory support/ maintenance contract . 1 mandatory dongle (hardware key - USB port). Optional FREE 3-day 'basic' training (STR90002) on PolyWorks/Inspector package, at InnovMetric (Quebec City). 'Classroom type' training at pre-determined dates. Up to TWO trainees.



## SOFT90007-N: PolyWorks/Inspector™ (Node)

PolyWorks/Inspector™ (Node) including IMInspect™, IGES and STEP. Includes 1 year mandatory support/ maintenance contract . 1 mandatory dongle (hardware key - USB port). Optional FREE 3-day 'basic' training (STR90002) on PolyWorks/Inspector package, at InnovMetric (Quebec City). 'Classroom type' training at pre-determined dates. Up to TWO trainees.



## SOFT90008-F: PolyWorks/Inspector™ Airfoil Gauge Module (Float)

Optional module for PolyWorks/Inspector licenses. (Float). \*Customer should already own or purchase a PolyWorks/Inspector license (PWIWA, PWINA, or PWMIN). (When ordering PWAFA, please apply same basic discount as for ordering 'CAD translators'.)



## SOFT90008-N: PolyWorks/Inspector™ Airfoil Gauge Module (Node)

Optional module for PolyWorks/Inspector licenses (Node).

\*Customer should already own or purchase a PolyWorks/Inspector license (PWIWA, PWINA, or PWMIN). (When ordering PWAf, please apply same basic discount as for ordering 'CAD translators'.)



## SOFT90017-N: PolyWorks/Inspector Probing™ (Node)

PolyWorks/Inspector Probing™ (Node) including IMInspect™ Probing, IGES and STEP. Includes 1 year mandatory support/ maintenance contract . 1 mandatory dongle (hardware key - USB port). (Optional CAD translators are available on PWIP licenses.)



## SOFT90018-N: PolyWorks/Inspector Probing™ "One year use" license (Node)

PolyWorks/Inspector Probing™ (Node) "One year use" license including IMInspect™ Probing, IGES and STEP (Temporary "one year use" license. Can be renewed yearly. Includes 1 year support/ maintenance contract . 1 mandatory dongle (hardware key - USB port). \*\*Optional CAD translators are not available on PWIP-1 "one year use" licenses and "one year use" licenses do not qualify to software upgrades.)



## SOFT90019-N: PolyWorks/Inspector Probing™ (Node) Facility Package

PolyWorks/Inspector Probing™ (Node) Package including IMInspect™ Probing, IGES and STEP. Includes 1 year support/ maintenance contract . 1 mandatory dongle (hardware key - USB port). INCLUDES 2-day training on PolyWorks/Inspector Probing Facility Package at InnovMetric (Quebec City). 'Hands-on' training at pre-determined dates. Up to two trainees may register. Trainees must bear their own T&L expenses. Must both register to the same training and confirm directly with InnovMetric. Note : No more than four attendants (from two different organizations) in total for any such training. (Optional CAD translators are available on PWIP licenses.). ONLY AVAILABLE in US, Canada and Mexico.



## SOFT90020-N: PolyWorks/Inspector Probing™ (Node) On-site Package

PolyWorks/Inspector Probing™ (Node) On-Site Package including IMInspect™ Probing, IGES and STEP. Includes 1 year support/ maintenance contract . 1 mandatory dongle (hardware key - USB port). INCLUDES 2-day training on PolyWorks/Inspector Probing package, ON-SITE. Trainer travel expenses included. Training at customer site for up to 6 people. (Optional CAD translators are available on PWIP licenses. ) \*\*Only Available in US, Canada and Mexico\*\*



## SOFT90021-N: Upgrade from PolyWorks/Inspector Probing™ to PolyWorks/Inspector™ (Node) Facility - Within 1st year

Upgrade from PolyWorks/Inspector Probing™ to PolyWorks/Inspector™ (Node) - WITHIN first year of PWIP purchase including IMInspect™, IGES and STEP. Includes 1 year support/ maintenance contract . 1 mandatory dongle (hardware key - USB port). INCLUDES 3-day 'basic' training on PolyWorks/Inspector package, at InnovMetric (Quebec City). 'Classroom type' training at pre-determined dates. Up to TWO trainees may register for each license ordered. Trainees must bear their own T&L expenses. Must both register to the same Classroom training and confirm directly with InnovMetric. Must be scheduled within one year from license purchase. After one year, regular fees to apply. \*\*Only Available in US, Canada and Mexico\*\*



## SOFT90022-N: Upgrade from PolyWorks/Inspector Probing™ to PolyWorks/Inspector™ (Node) - After 1st Yr of PWIP purchase.

Upgrade from PolyWorks/Inspector Probing™ to PolyWorks/Inspector™ - AFTER first year of PWIP purchase including IMInspect™, IGES and STEP (Node). Includes 1 year support/ maintenance contract . 1 mandatory dongle (hardware key - USB port). INCLUDES 3-day 'basic' training on PolyWorks/Inspector package, at InnovMetric (Quebec City). 'Classroom type' training at pre-determined dates. Up to TWO trainees may register for each license ordered. Trainees must bear their own T&L expenses. Must both register to the same Classroom training and confirm directly with InnovMetric. Must be scheduled within one year from license purchase. After one year, regular fees to apply. \*\*Only Available in US, Canada and Mexico\*\*



**SOFT90023-N:** Upgrade from PolyWorks/Inspector Probing™ to PolyWorks/Inspector with IMAAlign™ (Node) - Within 1st Yr of PWIP purchase.

Upgrade from PolyWorks/Inspector Probing™ to PolyWorks/Inspector with IMAAlign™ (Node) - WITHIN first year of PWIP purchase including IMAAlign™, IMInspect™, IGES and STEP. Includes 1 year support/ maintenance contract. 1 mandatory dongle (hardware key - USB port). INCLUDES 3-day 'basic' training on PolyWorks/Inspector package, at InnovMetric (Quebec City). 'Classroom type' training at pre-determined dates. Up to TWO trainees may register for each license ordered. Trainees must bear their own T&L expenses. Must both register to the same Classroom training and confirm directly with InnovMetric. Must be scheduled within one year from license purchase. After one year, regular fees to apply. \*\*Only Available in US, Canada and Mexico\*\*



**SOFT90024-N:** Upgrade from PolyWorks/Inspector Probing™ to PolyWorks/Inspector with IMAAlign™ (Node) - After 1st Yr of PWIP purchase

Upgrade from PolyWorks/Inspector Probing™ to PolyWorks/Inspector with IMAAlign™ (Node) - AFTER first year of PWIP purchase including IMAAlign™, IMInspect™, IGES and STEP. Includes 1 year support/ maintenance contract. 1 mandatory dongle (hardware key - USB port). INCLUDES 3-day 'basic' training on PolyWorks/Inspector package, at InnovMetric (Quebec City). 'Classroom type' training at pre-determined dates. Up to TWO trainees may register for each license ordered. Trainees must bear their own T&L expenses. Must both register to the same Classroom training and confirm directly with InnovMetric. Must be scheduled within one year from license purchase. After one year, regular fees to apply. \*\*Only Available in US, Canada and Mexico\*\*



**SOFT90026-N:** Upgrade from PolyWorks/Inspector Probing™ to PolyWorks/Modeler & Inspector™ + NURBS Surfacing Module (Node) - Within 1st Yr of PWIP purchase

Upgrade from PolyWorks/Inspector Probing™ to PolyWorks/Modeler & Inspector™ + NURBS Surfacing Module (Node) - WITHIN first year of PWIP purchase including IMAAlign™, IMMerge™, IMEdit™, NURBS Surfacing Module, IMCompress™, IMInspect™, IGES and STEP. INCLUDES 5-day 'basic' training on PolyWorks/Modeler&Inspector package, at InnovMetric (Quebec City). 'Classroom type' training at pre-determined dates. Up to TWO trainees may register for each license ordered. Trainees must bear their own T&L expenses. Must both register to the same Classroom training and confirm directly with InnovMetric. Must be scheduled within one year from license purchase. After one year, regular fees to apply.



**SOFT90027-N:** Upgrade from PolyWorks/Inspector Probing™ to PolyWorks/Modeler & Inspector™ + NURBS Surfacing Module (Node) - After 1st Yr of PWIP purchase

Upgrade from PolyWorks/Inspector Probing™ to PolyWorks/Modeler & Inspector™ + NURBS Surfacing Module (Node) - After first year of PWIP purchase including IMAAlign™, IMMerge™, IMEdit™, NURBS Surfacing Module, IMCompress™, IMInspect™, IGES and STEP. INCLUDES 5-day 'basic' training on PolyWorks/Modeler&Inspector package, at InnovMetric (Quebec City). 'Classroom type' training at pre-determined dates. Up to TWO trainees may register for each license ordered. Trainees must bear their own T&L expenses. Must both register to the same Classroom training and confirm directly with InnovMetric. Must be scheduled within one year from license purchase. After one year, regular fees to apply.



**SOFT90028-F:** PolyWorks/Surveyor™ (Float)

PolyWorks/Surveyor™ (Float) including IMAAlign™ and IMSurvey™. Includes 1 year mandatory support/ maintenance contract. 1 mandatory dongle (hardware key - USB port).



**SOFT90028-N:** PolyWorks/Surveyor™ (Node)

PolyWorks/Surveyor™ (Node) including IMAAlign™ and IMSurvey™. Includes 1 year mandatory support/ maintenance contract. 1 mandatory dongle (hardware key - USB port).



**SOFT90029-F:** PolyWorks/Surveyor & Modeler™ (Float)

PolyWorks/Surveyor & Modeler™ (Float) including IMAAlign™, IMSurvey™, IMMerge™, IMEdit™ and IMCompress™. Includes 1 year mandatory support/ maintenance contract. 1 mandatory dongle (hardware key - USB port).





## SOFT90029-N: PolyWorks/Surveyor & Modeler™ (Node)

PolyWorks/Surveyor & Modeler™ (Node) including IMAlign™, IMSurvey™, IMMerge™, IMEdit™ and IMCompress™. Includes 1 year mandatory support/ maintenance contract . 1 mandatory dongle (hardware key - USB port).



## SOFT90030-F: IMTexture™ Optional Module (Float)

IMTexture™ Optional Module (Float) for color digitizers for PolyWorks/Modeler licenses. Includes 1 year mandatory support/ maintenance contract . (No dongle included)



## SOFT90030-N: IMTexture™ Optional Module (Node)

IMTexture™ Optional Module (Node) for color digitizers for PolyWorks/Modeler licenses. Includes 1 year mandatory support/ maintenance contract . (No dongle included)

## FARO

### CAM2 Q



## 10691-001: CAM2 Q Measurement Software - Full Version

CAM2 Q Measurement Software - Full Version. Solid Metrology Made Simple. Full version includes the Device Control Panel for use with FARO Hardware and QuickTools Image Creator plug-ins for the creation of inspection programs with pictures. CAD vs. part comparisons, output of graphical, numeric-tabular reports. (10691-001)  
Requires choice of either Portlock, Softlock. (12009-001, 002)  
Reads Parasolid CAD files directly and includes CAD Translation of IGES, VDA, and STEP files to Parasolid. Other CAD translators are offered separately at an additional cost.



## 10691-002: CAM2 Q Measurement Software - Full Version (Transition)

CAM2 Q Measurement Software - Full Version (Transition from CAM2 X, CAM2 4.x and earlier, Insight and Automotive). Solid Metrology Made Simple. Full version includes the Device Control Panel for use with FARO Hardware and QuickTools Image Creator plug-ins for the creation of inspection programs with pictures. CAD vs. part comparisons, output of graphical, numeric-tabular reports. (10691-002)  
Requires choice of either Portlock, Softlock. (12009-001, 002)  
Reads Parasolid CAD files directly and includes CAD Translation of IGES, VDA, and STEP files to Parasolid. Other CAD translators are offered separately at an additional cost.



## 10691-003: CAM2 Q Measurement Software - No QuickTools

CAM2 Q Measurement software - No QuickTools. Solid Metrology Made Simple. This version includes the Device Control Panel plug-in for use with FARO Hardware. CAD vs. part comparisons, output of graphical, numeric-tabular reports. (10691-003)  
Requires choice of either Portlock, Softlock. (12009-001, 002)  
Reads Parasolid CAD files directly and includes CAD Translation of IGES, VDA, and STEP files to Parasolid. Other CAD translators are offered separately at an additional cost.



## 10691-004: CAM2 Q Measurement software - No QuickTools (Transition)

CAM2 Q Measurement software - No QuickTools (Transition from CAM2 X, CAM2 4.x and earlier, Insight and Automotive). Solid Metrology Made Simple. Full version includes the Device Control Panel for use with FARO Hardware. CAD vs. part comparisons, output of graphical, numeric-tabular reports. (10691-004)  
Requires choice of either Portlock, Softlock. (12009-001, 002)  
Reads Parasolid CAD files directly and includes CAD Translation of IGES, VDA, and STEP files to Parasolid. Other CAD translators are offered separately at an additional cost.



## 10691-005: CAM2 Q - Offline

This version of CAM2 Q includes modules for the review of data and creation of reports. Offers same functionality of standard version, without a hardware interface. Create offline Quicktool programs from a separate computer without tying up your measurement station. Measurement files from CAM2 Q can be opened and the full range of reporting options can be used to create, save, print, and e-mail reports in several formats including: .PDF, .HTML, .XLS, and .TXT. (10691-005) Requires choice of either Portlock, Softlock. (12009-001, 002)  
Reads Parasolid CAD files directly and includes CAD Translation of IGES, VDA, and STEP files to Parasolid. Other CAD translators are offered separately at an additional cost.



## 10691-006: CAM2 Q - QuickTools Upgrade

QuickTools Upgrade – This plug-in for CAM2 Q contains the QuickTools Image Creator plug-in for the creation of inspection programs with pictures.



## 12009-001: CAM2 Q License - Portlock

Provides CAM2 Q user with Portlock key which can be transferred between laptops.



## 12009-002: CAM2 Q License - No Portlock

Provides CAM2 Q user with a Software key only (no Portlock). License is locked to Laptop, but can be transferred upon request by FARO Customer Support



## 12009-003: CAM2 Q License - Network

Provides CAM2 Q user with a single Network Portlock which holds up to 50 licenses of CAM2 Q (multiple sales of CAM2 Q only)

### Measure X



## SOFT0252: CAM2 Measure X

CAM2 Measure X. Faro Authored measurement software that specializes in 3D measurements and CAD part comparisons. Automate the measurement process using Softcheck Tools and Learn and Execute modes. Outputs graphical and numeric-tabular reports. Includes Portlock, software CD, Softcheck Tool Developer module.



## SOFT0253: CAM2 Measure X UPGRADE

CAM2 Measure X, UPGRADE from previous version of CAM2, includes USB Portlock. Faro Authored measurement software that specializes in 3D measurements, CAD part comparisons and Learn/Execute modes. Outputs graphical and numeric-tabular reports. Includes portlock.



## SOFT0254: CAM2 Measure X NO Softcheck Tool

CAM2 Measure X. Faro Authored measurement software that specializes in 3D measurements and CAD part comparisons. Automate the measurement process using Learn and Execute mode. Outputs graphical and numeric-tabular reports. Includes Portlock, software CD.



## SOFT0372: CAM2 Measure X Unplugged

CAM2 Measure X Unplugged. Offers same functionality of standard version, without a hardware interface. Use to create offline Learn/Execute and Softcheck Tool programs from a separate computer without tying up your measurement station. Open measurement sessions for post processing, data analysis, report generation, etc. Includes Portlock, software CD, Softcheck Tool Developer module.

### Measure V4



## SOFT0047: CAM2 Measure v4 UPGRADE

CAM2 Measure 4.x upgrade from earlier versions. Faro Authored measurement software that specializes in 3D measurements and CAD to part comparisons. Automate the measurement process using Softcheck Tools and Learn and Execute modes. Outputs graphical and numeric-tabular reports. Includes one seat of CAM2 Measure.



## SOFT0072: CAM2 Measure v4 (SP)

CAM2 Measure 4.x in Spanish, requires Spanish OS. Faro Authored measurement software that specializes in 3D measurements and CAD part comparisons. Automate the measurement process using Softcheck Tools and Learn and Execute modes. Outputs graphical and numeric-tabular reports. Includes Portlock, software CD, Softcheck Tool Developer module.



## SOFT0127: CAM2 Measure v4 (JP)

CAM2 Measure 4.x Japanese, requires Japanese OS. Faro Authored measurement software that specializes in 3D measurements and CAD part comparisons. Automate the measurement process using Softcheck Tools and Learn and Execute modes. Outputs graphical and numeric-tabular reports. Includes Portlock, software CD, Softcheck Tool Developer module.



## SOFT0142: CAM2 Measure v4 (CH)

CAM2 Measure 4.x Chinese, requires Chinese OS. Faro Authored measurement software that specializes in 3D measurements and CAD part comparisons. Automate the measurement process using Softcheck Tools and Learn and Execute modes. Outputs graphical and numeric-tabular reports. Includes Portlock, software CD, Softcheck Tool Developer module.



## SOFT0183: CAM2 Measure v4 NO Softcheck Tool (SP)

CAM2 Measure 4.x Spanish. Faro Authored measurement software that specializes in 3D measurements and CAD part comparisons. Automate the measurement process using Learn and Execute mode. Outputs graphical and numeric-tabular reports. Includes Portlock, software CD.



## SOFT0184: CAM2 Measure v4 NO Softcheck Tool (PG)

CAM2 Measure 4.x Portuguese. Faro Authored measurement software that specializes in 3D measurements and CAD part comparisons. Automate the measurement process using Learn and Execute mode. Outputs graphical and numeric-tabular reports. Includes Portlock, software CD.



## SOFT0187: CAM2 Measure v4 NO Softcheck Tool (CH)

CAM2 Measure 4.x Chinese. Faro Authored measurement software that specializes in 3D measurements and CAD part comparisons. Automate the measurement process using Learn and Execute mode. Outputs graphical and numeric-tabular reports. Includes Portlock, software CD.

## Gage



### SOFT0332: GAGE for USB

GAGE software for any FARO USB arm. Use FARO's GAGE software to perform basic 3D measurements, part inspection, GD&T dimensioning and quick report generation. Includes software CD and portlock



### SOFT0342: GAGE for USB Upgrade

Upgrade existing GAGE software to run with any FARO USB arm. Includes software CD and portlock. Requires std. GAGE Software (SOFT0273).

## Third Party

### Geomagic



### SOFT80001: Wrap with Capture - Node

Geomagic Wrap. Point and polygon processing software includes tools for cleaning up and merging scan data and for creating polygon meshes. Suitable for creating watertight models for rapid prototyping and digital manufacturing. Dongle is not included with software and is not required. If a dongle is requested, order part number SOFT80046 to include dongle.



### SOFT80002: Wrap with Capture - Float

Geomagic Wrap. Point and polygon processing software includes tools for cleaning up and merging scan data and for creating polygon meshes. Suitable for create watertight models for rapid prototyping and digital manufacturing.



### SOFT80003: Qualify with Capture - Node

Geomagic Qualify. Enables fast, easy-to-understand graphical comparisons between CAD models and as-built parts for first-article inspection, inline or shop-floor inspection, trend analysis and in-depth assessment. Dongle is not included with software and is not required. If a dongle is requested, order part number SOFT80046 to include dongle.



### SOFT80004: Qualify with Capture - Float

Geomagic Qualify. Enables fast, easy-to-understand graphical comparisons between CAD models and as-built parts for first-article inspection, inline or shop-floor inspection, trend analysis and in-depth assessment.



### SOFT80005: Studio Shape (Capture, Wrap, Shape) - Node

Geomagic Studio - Shape Edition. Designed for medical and scientific applications where users want to create exact 3D replicas of organic objects such as bones or historical artifacts. Dongle is not included with software and is not required. If a dongle is requested, order part number SOFT80046 to include dongle.



### SOFT80006: Studio Shape (Capture, Wrap, Shape) - Float

Geomagic Studio - Shape Edition. Designed for medical and scientific applications where users want to create exact 3D replicas of organic objects such as bones or historical artifacts.



**SOFT80007: Studio Shape (Capture, Wrap, Shape) with Qualify - Node**

Geomagic Studio - Shape Edition with Qualify. Studio - Shape Edition is ideal for medical and scientific applications where users want to create exact 3D replicas of organic objects such as bones or historical artifacts. Geomagic Qualify enables fast, easy-to-understand graphical comparisons between CAD models and as-built parts for first-article inspection, inline or shop-floor inspection, trend analysis and in-depth assessment. Dongle is not included with software and is not required. If a dongle is requested, order part number SOFT80046 to include dongle.



**SOFT80008: Studio Shape (Capture, Wrap, Shape) with Qualify - Float**

Geomagic Studio - Shape Edition with Qualify. Studio - Shape Edition is ideal for medical and scientific applications where users want to create exact 3D replicas of organic objects such as bones or historical artifacts. Geomagic Qualify enables fast, easy-to-understand graphical comparisons between CAD models and as-built parts for first-article inspection, inline or shop-floor inspection, trend analysis and in-depth assessment.



**SOFT80009: Studio Fashion (Capture, Wrap, Fashion) - Node**

Geomagic Studio - Fashion Edition. Premier solution for mechanical design applications including new design and reverse engineering. Enables users to quickly extract design intent and recreate original surface aesthetics that can be further manipulated in CAD software. Dongle is not included with software and is not required. If a dongle is requested, order part number SOFT80046 to include dongle.



**SOFT80010: Studio Fashion (Capture, Wrap, Fashion) - Float**

Geomagic Studio - Fashion Edition. Premier solution for mechanical design applications including new design and reverse engineering. Enables users to quickly extract design intent and recreate original surface aesthetics that can be further manipulated in CAD software.



**SOFT80011: Studio Fashion (Capture, Wrap, Fashion) with Qualify - Node**

Geomagic Studio - Fashion Edition with Qualify. Premier Studio solution for mechanical design applications including new design and reverse engineering. Enables users to quickly extract design intent and recreate original surface aesthetics that can be further manipulated in CAD software. Geomagic Qualify enables fast, easy-to-understand graphical comparisons between CAD models and as-built parts for first-article inspection, inline or shop-floor inspection, trend analysis and in-depth assessment. Dongle is not included with software and is not required. If a dongle is requested, order part number SOFT80046 to include dongle.



**SOFT80012: Studio Fashion (Capture, Wrap, Fashion) with Qualify - Float**

Geomagic Studio - Fashion Edition with Qualify. Premier Studio solution for mechanical design applications including new design and reverse engineering. Enables users to quickly extract design intent and recreate original surface aesthetics that can be further manipulated in CAD software. Geomagic Qualify enables fast, easy-to-understand graphical comparisons between CAD models and as-built parts for first-article inspection, inline or shop-floor inspection, trend analysis and in-depth assessment.



**SOFT80013: Studio Complete (Capture, Wrap, Fashion, Shape) - Node**

Geomagic Studio - Complete Edition. Ideal for mechanical designers who want to extract design intent from existing objects for use in CAD and also want to perform FEA and CFD analysis on as-built parts. Dongle is not included with software and is not required. If a dongle is requested, order part number SOFT80046 to include dongle.



**SOFT80014: Studio Complete (Capture, Wrap, Fashion, Shape) - Float**

Geomagic Studio - Complete Edition. Ideal for mechanical designers who want to extract design intent from existing objects for use in CAD and also want to perform FEA and CFD analysis on as-built parts.



SOFT80015: Studio Complete (Capture, Wrap, Fashion, Shape) with Qualify - Node

Geomagic Studio - Complete Edition with Qualify. Studio - Complete edition is ideal for mechanical designers who want to extract design intent from existing objects for use in CAD and also want to perform FEA and CFD analysis on as-built parts. Geomagic Qualify enables fast, easy-to-understand graphical comparisons between CAD models and as-built parts for first-article inspection, inline or shop-floor inspection, trend analysis and in-depth assessment. Dongle is not included with software and is not required. If a dongle is requested, order part number SOFT80046 to include dongle.



SOFT80016: Studio Complete (Capture, Wrap, Fashion, Shape) with Qualify - Float

Geomagic Studio Complete (Capture, Wrap, Fashion, Shape) with Qualify - Float.



SOFT80017: Qualify added to Studio Fashion Edition (Capture, Wrap, Fashion)

Qualify Add-On to Studio Fashion (Capture, Wrap, Fashion). Requires reference to existing entitlement numbers. Dongle is not included with software and is not required. If a dongle is requested, order part number SOFT80046 to include dongle.



SOFT80018: Qualify added to Studio Shape Edition (Capture, Wrap, Shape)

Qualify Add-On to Studio Fashion (Capture, Wrap, Shape). Requires reference to existing entitlement numbers. Dongle is not included with software and is not required. If a dongle is requested, order part number SOFT80046 to include dongle.



SOFT80019: Qualify added to Studio Complete Edition

Qualify Add-On to Studio Complete (Capture, Wrap, Fashion, Shape). Requires reference to existing entitlement numbers. Dongle is not included with software and is not required. If a dongle is requested, order part number SOFT80046 to include dongle.



SOFT80020: Studio Fashion Edition (Capture, Wrap, Fashion) added to Qualify

Studio Fashion (Capture, Wrap, Fashion) add-On to Qualify. Requires reference to existing entitlement numbers. Dongle is not included with software and is not required. If a dongle is requested, order part number SOFT80046 to include dongle.



SOFT80021: Studio Shape Edition added to Qualify

Studio Shape (Capture, Wrap, Shape) add-On to Qualify. Requires reference to existing entitlement numbers. Dongle is not included with software and is not required. If a dongle is requested, order part number SOFT80046 to include dongle.



SOFT80022: Fashion added to Wrap Studio or Shape Studio (includes Capture)

Fashion Add-On to Wrap Studio or Shape Studio. Requires reference to existing entitlement numbers. Dongle is not included with software and is not required. If a dongle is requested, order part number SOFT80046 to include dongle.



SOFT80024: Geomagic Blade - Node

Geomagic Blade. Add-on to Geomagic Qualify for turbomachinery applications. Provides advanced digital techniques for aligning edge-to-pin contact, automatic dimensioning of blade-specific characteristics and automated twist analysis. Dongle is not included with software and is not required. If a dongle is requested, order part number SOFT80046 to include dongle.





SOFT80025: Geomagic Blade - Float

Geomagic Blade. Add-on to Geomagic Qualify for turbomachinery applications. Provides advanced digital techniques for aligning edge-to-pin contact, automatic dimensioning of blade-specific characteristics and automated twist analysis.



SOFT80034: Capture added to existing Wrap

Adding Capture to existing Wrap.



SOFT80035: Fashion Added to Shape Studio with Qualify Bundle

Fashion Added to Shape Studio with Qualify Bundle.



SOFT80036: Shape added to Studio Fashion

Shape added to Studio Fashion.



SOFT80037: Shape Added to Studio Fashion with Qualify

Shape Added to Studio Fashion with Qualify



SOFT80038: Educational RE-Node (Capture, Wrap, Shape, Fashion) (Dongle not provided for EDU)

Educational RE-Node (Capture, Wrap, Shape, Fashion) (Dongle not provided for EDU) (Educational Maintenance is a one-time annual fee for all seats. First Year Maintenance is REQUIRED with Education (SMA80025))



SOFT80039: Educational RE- Float (Capture, Wrap, Shape, Fashion) (Dongle not provided for EDU)

Educational RE- Float (Capture, Wrap, Shape, Fashion) (Dongle not provided for EDU) (Educational Maintenance is a one-time annual fee for all seats. First Year Maintenance is REQUIRED with Education (SMA80025))



SOFT80040: Educational Inspect-Node (Capture, Qualify & Blade) (Dongle not provided for EDU)

Educational Inspect-Node (Capture, Qualify & Blade) (Dongle not provided for EDU) (Educational Maintenance is a one-time annual fee for all seats. First Year Maintenance is REQUIRED with Education (SMA80025))



SOFT80041: Educational Inspect-Float (Capture, Qualify & Blade) (Dongle not provided for EDU)

Educational Inspect-Float (Capture, Qualify & Blade) (Dongle not provided for EDU) (Educational Maintenance is a one-time annual fee for all seats. First Year Maintenance is REQUIRED with Education (SMA80025))



SOFT80042: Educational Complete-Node (Capture, Wrap, Shape, Qualify & Fashion)  
(Dongle not provided for EDU)

Educational Complete-Node (Capture, Wrap, Shape, Qualify & Fashion) (Dongle not provided for EDU) (Educational Maintenance is a one-time annual fee for all seats. First Year Maintenance is REQUIRED with Education (SMA80025))



SOFT80043: Educational Complete-Float (Capture, Wrap, Shape, Qualify & Fashion)  
(Dongle not provided for EDU)

Educational Complete-Float (Capture, Wrap, Shape, Qualify & Fashion) (Dongle not provided for EDU) (Educational Maintenance is a one-time annual fee for all seats. First Year Maintenance is REQUIRED with Education (SMA80025))



SOFT80044: Additional Educational Seat

Additional Educational Seat (Maximum 20 Seats total) Educational Maintenance is a one-time annual fee for all seats. Maintenance covered under 1st seat.



SOFT80046: Geomagic USB Dongle/Portlock

Geomagic USB Dongle/Portlock



SOFT80049: Fashion - Node

Fashion - Node



SOFT80050: Fashion - Float

Fashion - Float



SOFT80051: Shape - Node

Shape - Node



SOFT80052: Shape - Float

Shape - Float

## New River Kinematics



SOFT70000: SA Basic

Basic SA analysis capability, standard CAD exchange (IGES, STEP), and interfaces to all portable instruments. Includes 12 months of maintenance, upgrades, internet and telephone support.



SOFT70000-GRP: Group SA Basic License Purchase

Spatial Analyzer Basic Group License up to 100 users (NRK must pre-qualify group). Includes 12 months of maintenance, upgrades, internet and telephone support.



## SOFT70001: SA Ultimate

SA Basic plus all SA capabilities except Native CAD. Includes: GD&T, Measurement Plan, SA SDK, USMN, Relationship Fitting, Transformation Tracking, Reverse Design, Robot Calibration, and Pipe Fitting. Includes 12 months of maintenance, upgrades, internet and telephone support.



## SOFT70001-GRP: GROUP SA Ultimate

Adds an SA Ultimate license to a group license (SOFT7000-GRP). Includes 12 months of maintenance, upgrades, internet and telephone support.



## SOFT70002: SA Ultimate + Native CAD

SA Ultimate plus Native CAD Import (Catia V4 & V5, CGR, Unigraphics, Pro-E, Solidworks and over 20 other CAD formats) - includes Adobe Acrobat Pro Extended. Includes 12 months of maintenance, upgrades, internet and telephone support.



## SOFT70002-GRP: GROUP SA Ultimate + CAD

Adds an SA Ultimate + Native CAD license to a group license (SOFT7000-GRP). Includes 12 months of maintenance, upgrades, internet and telephone support.

## Verisurf



## SOFT80067: Verisurf BASIC SYSTEM (CAD, TOOLS, MBD & VDI)

Verisurf's CAD system and the Verisurf Device Interface (VDI). Includes 1 year product upgrade and support provided by Verisurf Software. Node or Float. (Must include SOFT80090 if you are ordering as a floating license.)



## SOFT80068: Verisurf BASIC SYSTEM (CAD,TOOLS, MBD & VDI) Seat 2 and above

Verisurf's CAD system and the Verisurf Device Interface (VDI). Seat 2 and above. Includes 1 year product upgrade and support provided by Verisurf Software. Node or Float.



## SOFT80069: Verisurf BASIC SYSTEM PLUS ANY TWO MODULES

Verisurf's CAD system and (VDI) plus any two modules. Includes 1 year product upgrade and support provided by Verisurf Software. Node or Float. (Must include SOFT80090 if you are ordering as a floating license.)



## SOFT80070: Verisurf BASIC SYSTEM PLUS ANY TWO MODULES, Seat 2 and above

Verisurf's CAD system and (VDI) plus any two modules. Seat 2 and above. Includes 1 year product upgrade and support provided by Verisurf Software.



## SOFT80071: Verisurf BASIC SYSTEM PLUS ANY THREE MODULES

Verisurf's CAD system and (VDI) plus any three modules. Includes 1 year product upgrade and support provided by Verisurf Software. Node or Float. (Must include SOFT80090 if you are ordering as a floating license.)



SOFT80072: Verisurf BASIC SYSTEM PLUS ANY THREE MODULES, Seat 2 and above

Verisurf's CAD system and (VDI) plus any three modules. Seat 2 and above. Includes 1 year product upgrade and support provided by Verisurf Software. Node or Float.



SOFT80073: Verisurf MEASURE MODULE

Fast and easy measuring of primitive geometric features. Includes 1 year product upgrade and support provided by Verisurf Software. Node or Float. (Must include SOFT80090 if you are ordering a floating license.)



SOFT80074: Verisurf MEASURE MODULE, Seat 2 and above

Fast and easy measuring of primitive geometric features. Seat 2 and above. Includes 1 year product upgrade and support provided by Verisurf Software. Node or Float.



SOFT80075: Verisurf ANALYSIS MODULE

Compares post-acquisition measurement point data to the CAD model's nominal definition. Includes 1 year product upgrade and support provided by Verisurf Software. Node or Float. (Must include SOFT80090 if you are ordering a floating license.)



SOFT80076: Verisurf ANALYSIS MODULE. Seat 2 and above

Compares post-acquisition measurement point data to the CAD model's nominal definition. Seat 2 and above. Includes 1 year product upgrade and support provided by Verisurf Software. Node or Float.



SOFT80077: Verisurf BUILD MODULE

The "Virtual Gage", provides real-time inspection to the CAD model. Includes 1 year product upgrade and support provided by Verisurf Software. Node or Float. (Must include SOFT80090 if you are ordering a floating license.)



SOFT80078: Verisurf BUILD MODULE, Seat 2 and above

The "Virtual Gage", provides real-time inspection to the CAD model. Seat 2 and above. Includes 1 year product upgrade and support provided by Verisurf Software. Node or Float.



SOFT80079: Verisurf REVERSE MODULE

Provides full point cloud surfacing including dense pointcloud scanning AND hard or single-point probing. Includes 1 year product upgrade and support provided by Verisurf Software. Node or Float. (Must include SOFT80090 if you are ordering a floating license.)



SOFT80080: Verisurf REVERSE MODULE, Seat 2 and above

Provides full point cloud surfacing including dense pointcloud scanning AND hard or single-point probing. Seat 2 and above. Includes 1 year product upgrade and support provided by Verisurf Software. Node or Float.



## SOFT80081: Verisurf COMPLETE BUNDLE

Verisurf Basic CAD System, VDI, Measure, Analysis, Build and Reverse at a special bundle price. Includes 1 year product upgrade and support provided by Verisurf Software. (Must include SOFT80090 if you are ordering a floating license.)



## SOFT80082: Verisurf COMPLETE BUNDLE, Seat 2 and above

Verisurf Basic CAD System, VDI, Measure, Analysis, Build and Reverse at a special bundle price. Seat 2 and above. Includes 1 year product upgrade and support provided by Verisurf Software.



## SOFT80090: VERISURF NETWORK LICENSE

Network License Fee. One time license fee for all seats of floating licenses when purchasing program software.

### Delcam



## SOFT0373: FARO PowerINSPECT Point Cloud Real Time

Faro PowerINSPECT Point Cloud Real Time - Real Time Connection to the ScanArm. Faro PowerINSPECT and Faro PowerINSPECT Point Cloud are a prerequisites. Requires DLCM-07 for 1st Year maintenance. Not included.



## SOFT0374: FARO PowerINSPECT Point Cloud Offline

Faro PowerINSPECT Point Cloud Offline - reading files of points. Faro PowerINSPECT is a prerequisite. Requires DLCM-05 for 1st Year maintenance. Not included.



## SOFT0375: FARO PowerINSPECT

PowerINSPECT (Includes PS-Exchange All Neutral Import & Export) for FaroArms, ScanArms and Tracker systems. Requires DLCM-01 for 1st Year maintenance. Not included.



## SOFT0383: FARO PowerINSPECT Lite

PowerINSPECT Lite for Manual devices (Includes PS-Exchange All Neutral Import & Export) for FaroArms, ScanArms and Tracker systems. Requires DLCM-03 for 1st Year maintenance. Not included.

## Translator



## SOFT90009-F: CATIA V4 & V5 Translators (Float)

CATIA V4 & V5 Translators (Float). PolyWorks/Inspector Translators\* optional modules for PolyWorks/Inspector licenses. Includes 1 year mandatory support/ maintenance contract . \*These translators can only be used with the IMInspect module so customer should already own or purchase the IMInspect module.



## SOFT90009-N: CATIA V4 & V5 Translators (Node)

CATIA V4 & V5 Translators (Node). PolyWorks/Inspector Translators\* optional modules for PolyWorks/Inspector licenses. Includes 1 year mandatory support/ maintenance contract . \*These translators can only be used with the IMInspect module so customer should already own or purchase the IMInspect module.



## SOFT90010-F: CATIA V5 Translator (Float)

CATIA V5 Translator (Float). PolyWorks/Inspector Translators\* optional modules for PolyWorks/Inspector licenses. Includes 1 year mandatory support/ maintenance contract . \*These translators can only be used with the IMInspect module so customer should already own or purchase the IMInspect module.



## SOFT90010-N: CATIA V5 Translator (Node)

CATIA V5 Translator (Node). PolyWorks/Inspector Translators\* optional modules for PolyWorks/Inspector licenses. Includes 1 year mandatory support/ maintenance contract . \*These translators can only be used with the IMInspect module so customer should already own or purchase the IMInspect module.



## SOFT90011-F: CATIA V4 Translator (Float)

CATIA V4 Translator (Float). PolyWorks/Inspector Translators\* optional modules for PolyWorks/Inspector licenses. Includes 1 year mandatory support/ maintenance contract . \*These translators can only be used with the IMInspect module so customer should already own or purchase the IMInspect module.



## SOFT90011-N: CATIA V4 Translator (Node)

CATIA V4 Translator (Node). PolyWorks/Inspector Translators\* optional modules for PolyWorks/Inspector licenses. Includes 1 year mandatory support/ maintenance contract . \*These translators can only be used with the IMInspect module so customer should already own or purchase the IMInspect module.



## SOFT90012-F: VDA Translator (Float)

VDA Translator (Float). PolyWorks/Inspector Translators\* Optional modules for PolyWorks/Inspector licenses. Includes 1 year mandatory support/ maintenance contract . \*These translators can only be used with the IMInspect module so customer should already own or purchase the IMInspect module.



## SOFT90012-N: VDA Translator (Node)

VDA Translator (Node). PolyWorks/Inspector Translators\* Optional modules for PolyWorks/Inspector licenses. Includes 1 year mandatory support/ maintenance contract . \*These translators can only be used with the IMInspect module so customer should already own or purchase the IMInspect module.



## SOFT90013-F: Pro/E Translator (Float)

Pro/E Translator (Float). PolyWorks/Inspector Translators\* optional modules for PolyWorks/Inspector licenses \*These translators can only be used with the IMInspect module so customer should already own or purchase the IMInspect module.



## SOFT90013-N: Pro/E Translator (Node)

Pro/E Translator (Node). PolyWorks/Inspector Translators\* optional modules for PolyWorks/Inspector licenses \*These translators can only be used with the IMInspect module so customer should already own or purchase the IMInspect module.



## SOFT90014-F: UG Translator (Float)

UG Translator (Float). PolyWorks/Inspector Translators\* optional modules for PolyWorks/Inspector licenses. Includes 1 year mandatory support/ maintenance contract . \*These translators can only be used with the IMInspect module so customer should already own or purchase the IMInspect module.





## SOFT90014-N: UG Translator (Node)

UG Translator (Node). PolyWorks/Inspector Translators\* optional modules for PolyWorks/Inspector licenses. Includes 1 year mandatory support/ maintenance contract . \*These translators can only be used with the IMInspect module so customer should already own or purchase the IMInspect module.



## SOFT90015-F: Inventor Translator (Float)

Inventor Translator (Float). PolyWorks/Inspector Translators\* optional modules for PolyWorks/Inspector licenses \*These translators can only be used with the IMInspect module so customer should already own or purchase the IMInspect module.



## SOFT90015-N: Inventor Translator (Node)

Inventor Translator (Node). PolyWorks/Inspector Translators\* optional modules for PolyWorks/Inspector licenses \*These translators can only be used with the IMInspect module so customer should already own or purchase the IMInspect module.



## SOFT90016-F: SolidWorks Translator (Float)

SolidWorks Translator (Float). PolyWorks/Inspector Translators\* optional modules for PolyWorks/Inspector licenses. Includes 1 year mandatory support/ maintenance contract . \*These translators can only be used with the IMInspect module so customer should already own or purchase the IMInspect module.



## SOFT90016-N: SolidWorks Translator (Node)

SolidWorks Translator (Node). PolyWorks/Inspector Translators\* optional modules for PolyWorks/Inspector licenses. Includes 1 year mandatory support/ maintenance contract . \*These translators can only be used with the IMInspect module so customer should already own or purchase the IMInspect module.

## FARO

### CAM2 Q



## 12008-001: CATIA v4 for CAM2 Q

CATIA v4 translator from Techsoft3D



## 12008-003: CATIA v5 for CAM2 Q

CATIA v5 translator from Techsoft3D



## 12008-005: Unigraphics for CAM2 Q

Unigraphics translator from Techsoft3D



## 12008-009: SolidWorks for CAM2 Q

SolidWorks translator from Techsoft3D



12008-011: Pro/E for CAM2 Q

Pro/E translator from Techsoft 3D



12008-013: ACIS for CAM2 Q

ACIS translator from Techsoft 3D



12008-015: Inventor for CAM2 Q

Inventor translator from Techsoft 3D

## Measure X



SOFT0257: CATIA v4 Translator for Measure X

CATIA v4 Translator for CAM2 Measure X. Supports CATIA Versions 4.1.x to 4.2.4 and the \*.exp, \*.model file extensions. Supplied by DATAKIT.



SOFT0258: CATIA v5 Translator for Measure X

CATIA v5 Translator for CAM2 Measure X1. Supports CATIA Version 5 (V5R7 to V5R17) and the \*.CATPart, \*.CATProduct file extensions. Supplied by DATAKIT.



SOFT0259: PRO-E Translator for Measure X

PRO-E Translator for CAM2 Measure X. Supports PRO-E Versions up to WildFire 2.0 and the \*.prt file extension. Supplied by DATAKIT. Requires End User License Agreement (EULA) between customer and DATAKIT.



SOFT0260: Parasolid Translator for Measure X

Parasolid Translator for CAM2 Measure X. Supports all Parasolid versions and the \*.x\_t file extension. Supplied by DATAKIT.



SOFT0261: Unigraphics Translator for Measure X

Unigraphics Translator for CAM2 Measure X. Supports Unigraphics Versions 15 to NX3.0 and the \*.prt file extension. Supplied by DATAKIT.



SOFT0262: Solidworks Translator for Measure X

Solidworks Translator for CAM2 Measure X. Supports Solidworks Versions 1999 to 2007 and the \*.sldprt file extension. Supplied by DATAKIT.



SOFT0263: Solid Edge Translator for Measure X

Solid Edge Translator for CAM2 Measure X. Supports Solid Edge Versions 9 up to 14 and the \*.par file extension. Supplied by DATAKIT.



SOFT0264: Inventor Translator for Measure X1

Inventor Translator for CAM2 Measure X1. Supports Inventor Versions up to 9 and the \*.ipt extension. Supplied by DATAKIT.

## Measure V4



SOFT0157: Pro E Translator for Measure v4

Pro Engineer Import Translator for CAM2 Measure 4.



SOFT0158: CATIA v4 Translator for Measure v4

CATIA v4 Import/export Translator for CAM2 Measure 4

## Third Party

### Geomagic



SOFT80026: Catia V Importer - Node

Importer CATIA V5 (Node). Includes 1st year maintenance.



SOFT80027: Catia V Importer - Float

Importer CATIA V5 (Float). Includes 1st year maintenance.



SOFT80028: Catia IV Importer - Node

Importer CATIA V4 (Node). Includes 1st year maintenance.



SOFT80029: Catia IV Importer - Float

Importer CATIA V4 (Float). Includes 1st year maintenance.



SOFT80030: UniGraphics Importer - Node

Importer Unigraphics (Node). Includes 1st year maintenance.



SOFT80031: UniGraphics Importer - Float

Importer Unigraphics (Float). Includes 1st year maintenance.



SOFT80032: SolidWorks Importer - Node

Importer Solidworks (Node). Includes 1st year maintenance.



SOFT80033: SolidWorks Importer - Float  
Importer Solidworks (Float). Includes 1st year maintenance.

## Verisurf



SOFT80083: Verisurf CATIA V4 Read/Write  
Read and write native CATIA EXP,MOD,MDL and MODEL files directly into or out from Verisurf. Includes 1 year product upgrade and support provided by Verisurf Software.



SOFT80084: Verisurf CATIA V5 Read  
Read V5 CATPART and CATPRODUCT into Verisurf. Includes 1 year product upgrade and support provided by Verisurf Software.



SOFT80085: Verisurf CATIA V4/V5 COMBO PACKAGE  
Read V4 and V5 CATPART and CATPRODUCT into Verisurf. Includes 1 year product upgrade and support provided by Verisurf Software.



SOFT80086: Verisurf CATIA V5 FTA Import to Verisurf MBD  
Import CATIA V5 MBD/GD&T (Tolerancing information, MBD Dimensions, etc.). Includes 1 year product upgrade and support provided by Verisurf Software.



SOFT80087: Verisurf UNIGRAPHICS Read  
Unigraphics Version 15 through NX6, assemblies, solids, surfaces, geometric dimensioning and tolerancing (GD&T) data, and property info. Includes 1 year product upgrade and support provided by Verisurf Software.



SOFT80088: Verisurf PRO-ENGINEER Read  
Read native Pro-E files into Verisurf. Includes 1 year product upgrade and support provided by Verisurf Software.



SOFT80089: Verisurf SOLIDS  
Fully integrated Parasolid based solid modeler. Includes 1 year product upgrade and support provided by Verisurf Software.

## Delcam



SOFT0376: Delcam SolidWorks Import  
SolidWorks Import (Inc 2004). Requires DLCM-21 for 1st Year maintenance. Not included.



SOFT0377: Delcam Unigraphics Import  
Unigraphics Import (Versions 10 -18, NX3). Requires DLCM-19 for 1st Year maintenance. Not included.



**SOFT0378: Delcam ProE Import**

ProE Import (Version 16-2000i2 & Wildfire 1 &2). Requires DLCM-17 for 1st Year maintenance. Not included.



**SOFT0380: Delcam CATIA Import**

CATIA Import (Versions 3, 4 & 5). Requires DLCM-13 for 1st Year maintenance. Not included.



**SOFT0381: Delcam PS-Exchange Pro Import**

PS-Exchange Pro. All proprietary Import Formats. ProE, UG, Catia, SDRC, SolidEdge, Solidworks, Cimatron, Rhino, Parasolid, ACIS & Inventor. Requires DLCM-11 for 1st Year maintenance. Not included.



**SOFT0387: Delcam SolidEdge Import**

SolidEdge Import. Requires DLCM-23 for 1st Year maintenance. Not included.



**SOFT0388: Delcam Parasolid Import**

Parasolid Import. Requires DLCM-25 for 1st Year maintenance. Not included.



**SOFT0389: Delcam Cimatron Import**

Cimatron Import. Requires DLCM-27 for 1st Year maintenance. Not included.



**SOFT0390: Delcam SDRC Ideas Import**

SDRC Ideas Import (Versions 4 to 9). Requires DLCM-29 for 1st Year maintenance. Not Included.



**SOFT0392: Delcam Rhino Import**

Rhino Import and Export. Requires DLCM-33 for 1st Year maintenance. Not Included.



**SOFT0393: Delcam ACIS Import**

ACIS Import. Requires DLCM-35 for 1st Year maintenance. Not included.



**SOFT0411: Delcam AutoDesk Inventor Import**

AutoDesk Inventor Import. Requires DLCM-49 for 1st Year maintenance. Not included.

## Maintenance



SMA90001: PolyWorks/Modeler & Inspector™ + NURBS Support Contract Renewal (Node or Float)

PolyWorks/Modeler & Inspector™ + NURBS Surfacing Module. Support Contract Renewal for the renewal of annual support/maintenance contracts for each subsequent year (after the first year). (Node or Float)



SMA90002: PolyWorks/Modeler & Inspector™ Support Contract Renewal (Node or Float)

PolyWorks/Modeler & Inspector™ Support Contract Renewal for the renewal of annual support/maintenance contracts for each subsequent year (after the first year). (Node or Float)



SMA90003: PolyWorks/Modeler™ + NURBS Surfacing Module Support Contract Renewal (Node or Float)

PolyWorks/Modeler™ + NURBS Surfacing Module Support Contract Renewal for the renewal of annual support/maintenance contracts for each subsequent year (after the first year). (Node or Float)



SMA90004: PolyWorks/Modeler™ Support Contract Renewal (Node or Float)

PolyWorks/Modeler™ Support Contract Renewal for the renewal of annual support/maintenance contracts for each subsequent year (after the first year). (Node or Float)



SMA90005: PolyWorks/Advanced Manufacturing Module Support Contract Renewal (Node or Float)

PolyWorks/Advanced Manufacturing Module Support Contract Renewal for the renewal of annual support/maintenance contracts for each subsequent year (after the first year). (Node or Float)



SMA90006: PolyWorks/Inspector with IMAlign™ Support Contract Renewal Node-Locked

PolyWorks/Inspector with IMAlign™ Support Contract Renewal for the renewal of annual support/maintenance contracts for each subsequent year (after the first year). (Node or Float)



SMA90007: PolyWorks/Inspector™ Support Contract Renewal (Node or Float)

PolyWorks/Inspector™ Support Contract Renewal for the renewal of annual support/maintenance contracts for each subsequent year (after the first year). (Node or Float)



SMA90008: PolyWorks/Inspector™ Airfoil Gauge Module Support Contract Renewal (Node or Float)

PolyWorks/Inspector™ Airfoil Gauge Module Support Contract Renewal for the renewal of annual support/maintenance contracts for each subsequent year (after the first year). (Node or Float)



SMA90009: CATIA V4 & V5 Translators Support Contract Renewal (Node or Float)

CATIA V4 & V5 Translators Support Contract Renewal for the renewal of annual support/maintenance contracts for each subsequent year (after the first year). (Node or Float)





SMA90010: CATIA V5 Translator Support Contract Renewal (Node or Float)

CATIA V5 Translator Support Contract Renewal for the renewal of annual support/maintenance contracts for each subsequent year (after the first year). (Node or Float)



SMA90011: CATIA V4 Translator Support Contract Renewal (Node or Float)

CATIA V4 Translator Support Contract Renewal for the renewal of annual support/maintenance contracts for each subsequent year (after the first year). (Node or Float)



SMA90012: VDA Translator Support Contract Renewal (Node or Float)

VDA Translator Support Contract Renewal for the renewal of annual support/maintenance contracts for each subsequent year (after the first year). (Node or Float)



SMA90013: Pro/E Translator Support Contract Renewal (Node or Float)

Pro/E Translator Support Contract Renewal for the renewal of annual support/maintenance contracts for each subsequent year (after the first year). (Node or Float)



SMA90014: UG Translator Support Contract Renewal (Node or Float)

UG Translator Support Contract Renewal for the renewal of annual support/maintenance contracts for each subsequent year (after the first year). (Node or Float)



SMA90015: Inventor Translator Support Contract Renewal (Node or Float)

Inventor Translator Support Contract Renewal for the renewal of annual support/maintenance contracts for each subsequent year (after the first year). (Node or Float)



SMA90016: SolidWorks Translator Support Contract Renewal (Node or Float)

SolidWorks Translator Support Contract Renewal for the renewal of annual support/maintenance contracts for each subsequent year (after the first year). (Node or Float)



SMA90017: PolyWorks/Inspector Probing™ Support Contract Renewal (Node or Float)

PolyWorks/Inspector Probing™ Support Contract Renewal for the renewal of annual support/maintenance contracts for each subsequent year (after the first year). (Node)



SMA90019: PolyWorks/Inspector Probing™ FacilitySupport Contract Renewal (Node)

PolyWorks/Inspector Probing™ Support Contract Renewal for the renewal of annual support/maintenance contracts for each subsequent year (after the first year). (Node )



SMA90028: PolyWorks/Surveyor™ Support Contract Renewal (Node or Float)

PolyWorks/Surveyor™ Support Contract Renewal for the renewal of annual support/maintenance contracts for each subsequent year (after the first year). (Node or Float)



SMA90029: PolyWorks/Surveyor & Modeler™ Support Contract Renewal (Node or Float)

PolyWorks/Surveyor & Modeler™ Support Contract Renewal for the renewal of annual support/maintenance contracts for each subsequent year (after the first year). (Node or Float)



SMA90030: IMTexture™ Optional Module Support Contract Renewal (Node or Float)

IMTexture™ Optional Module Support Contract Renewal for the renewal of annual support/maintenance contracts for each subsequent year (after the first year). (Node or Float)

## FARO

### CAM2 Q



10691-001-M01: CAM2 Q Full - 1 year Maintenance

CAM2 Q Full - 1 year Maintenance. Upon expiration, you may renew your maintenance package for an additional 1 yr. term at the same rate.



10691-001-M03: CAM2 Q Full - 3 year Maintenance

CAM2 Q Full - 3 year Maintenance. Upon expiration, you may renew your maintenance package for an additional 3 yr. term at the same rate.



10691-002-M01: CAM2 Q Full Transition - 1 year Maintenance

CAM2 Q Full Transition - 1 year Maintenance. Upon expiration, you may renew your maintenance package for an additional 1 yr. term at the same rate.



10691-002-M03: CAM2 Q Full Transition - 3 year Maintenance

CAM2 Q Full Transition - 3 year Maintenance. Upon expiration, you may renew your maintenance package for an additional 3 yr. term at the same rate.



10691-003-M01: CAM2 Q No QuickTools - 1 year Maintenance

CAM2 Q No QuickTools - 1 year Maintenance. Upon expiration, you may renew your maintenance package for an additional 1 yr. term at the same rate.



10691-003-M03: CAM2 Q No QuickTools - 3 year Maintenance

CAM2 Q No QuickTools - 3 year Maintenance. Upon expiration, you may renew your maintenance package for an additional 3 yr. term at the same rate.



10691-004-M01: CAM2 Q No QuickTools Transition - 1 year Maintenance

CAM2 Q No QuickTools Transition - 1 year Maintenance. Upon expiration, you may renew your maintenance package for an additional 1 yr. term at the same rate.



10691-004-M03: CAM2 Q No QuickTools Transition - 3 year Maintenance

CAM2 Q No QuickTools Transition - 3 year Maintenance. Upon expiration, you may renew your maintenance package for an additional 3 yr. term at the same rate.



10691-005-M01: CAM2 Q Offline - 1 year Maintenance

CAM2 Q Offline - 1 year Maintenance. Upon expiration, you may renew your maintenance package for an additional 1 yr. term at the same rate.



10691-005-M03: CAM2 Q Offline - 3 year Maintenance

CAM2 Q Offline - 3 year Maintenance. Upon expiration, you may renew your maintenance package for an additional 3 yr. term at the same rate.



10691-006-M01: CAM2 Q No QuickTools Upgrade to Full - 1 year Maintenance

CAM2 Q No QuickTools Upgrade to Full - 1 year Maintenance. Upon expiration, you may renew your maintenance package for an additional 1 yr. term at the same rate.



10691-006-M03: CAM2 Q No QuickTools Upgrade to Full - 3 year Maintenance

CAM2 Q No QuickTools Upgrade to Full - 3 year Maintenance. Upon expiration, you may renew your maintenance package for an additional 3 yr. term at the same rate.

## CAD Translators

### CAM2 Q



12008-001-M01: CAM2 Q Translator - CATIA V4 - 1 year Maintenance

CAM2 Q Translator - CATIA V4 - 1 year Maintenance. Upon expiration, you may renew your maintenance package for an additional 1 yr. term at the same rate.



12008-001-M03: CAM2 Q Translator - CATIA V4 - 3 year Maintenance

CAM2 Q Translator - CATIA V4 - 3 year Maintenance. Upon expiration, you may renew your maintenance package for an additional 3 yr. term at the same rate.



12008-003-M01: CAM2 Q Translator Maintenance - CATIA V5 - 1 year

CAM2 Q Translator Maintenance - CATIA V5 - 1 year. Upon expiration, you may renew your maintenance package for an additional 1 yr. term at the same rate.



12008-003-M03: CAM2 Q Translator Maintenance - CATIA V5 - 3 year

CAM2 Q Translator Maintenance - CATIA V5 - 3 year. Upon expiration, you may renew your maintenance package for an additional 3 yr. term at the same rate.



12008-005-M01: CAM2 Q Translator Maintenance - Unigraphics - 1 year

CAM2 Q Translator Maintenance - Unigraphics - 1 year. Upon expiration, you may renew your maintenance package for an additional 1 yr. term at the same rate.



12008-005-M03: CAM2 Q Translator Maintenance - Unigraphics - 3 year

CAM2 Q Translator Maintenance - Unigraphics - 3 year. Upon expiration, you may renew your maintenance package for an additional 3 yr. term at the same rate.



12008-009-M01: CAM2 Q Translator Maintenance - SolidWorks - 1 year

CAM2 Q Translator Maintenance - SolidWorks - 1 year. Upon expiration, you may renew your maintenance package for an additional 1 yr. term at the same rate.



12008-009-M03: CAM2 Q Translator Maintenance - SolidWorks - 3 year

CAM2 Q Translator Maintenance - SolidWorks - 3 year. Upon expiration, you may renew your maintenance package for an additional 3 yr. term at the same rate.



12008-011-M01: CAM2 Q Translator Maintenance - Pro Engineer - 1 year

CAM2 Q Translator Maintenance - Pro Engineer - 1 year. Upon expiration, you may renew your maintenance package for an additional 1 yr. term at the same rate.



12008-011-M03: CAM2 Q Translator Maintenance - Pro Engineer - 3 year

CAM2 Q Translator Maintenance - Pro Engineer - 3 year. Upon expiration, you may renew your maintenance package for an additional 3 yr. term at the same rate.



12008-013-M01: CAM2 Q Translator Maintenance - ACIS - 1 year

CAM2 Q Translator Maintenance - ACIS - 1 year. Upon expiration, you may renew your maintenance package for an additional 1 yr. term at the same rate.



12008-013-M03: CAM2 Q Translator Maintenance - ACIS - 3 year

CAM2 Q Translator Maintenance - ACIS - 3 year. Upon expiration, you may renew your maintenance package for an additional 3 yr. term at the same rate.



12008-015-M01: CAM2 Q Translator Maintenance - Inventor - 1 year

CAM2 Q Translator Maintenance - Inventor - 1 year. Upon expiration, you may renew your maintenance package for an additional 1 yr. term at the same rate.



12008-015-M03: CAM2 Q Translator Maintenance - Inventor - 3 year

CAM2 Q Translator Maintenance - Inventor - 3 year. Upon expiration, you may renew your maintenance package for an additional 3 yr. term at the same rate.



## Third Party

### Geomagic



SMA80001: Maintenance 1 Year - Wrap with Capture - Node or Float  
Maintenance - Geomagic Wrap with Capture - Node or Float



SMA80002: Maintenance 1 Year - Qualify with Capture - Node or Float  
Maintenance - Geomagic Qualify with Capture - Node or Float



SMA80003: Maintenance 1 Year - Studio Shape - Node or Float  
Maintenance - Geomagic Studio Shape - Node or Float



SMA80004: Maintenance 1 Year - Studio Shape with Qualify - Node or Float  
Maintenance - Geomagic Studio Shape with Qualify - Node or Float



SMA80005: Maintenance 1 Year - Studio Fashion - Node or Float  
Maintenance - Geomagic Studio Fashion - Node or Float



SMA80006: Maintenance 1 Year - Studio Fashion with Qualify - Node or Float  
Maintenance - Geomagic Studio Fashion - with Qualify - Node or Float



SMA80007: Maintenance 1 Year - Studio Complete - Node or Float  
Maintenance - Geomagic Studio Complete - Node or Float



SMA80008: Maintenance 1 Year - Studio Complete with Qualify - Node or Float  
Maintenance - Geomagic Studio Complete with Qualify - Node or Float



SMA80009: Maintenance 1 Year - Qualify added to Studio Fashion or Studio Shape Edition  
Maintenance - Qualify added to Studio Fashion or Studio Shape Edition



SMA80010: Maintenance 1 Year - Qualify added to Studio Complete Edition  
Maintenance - Qualify added to Studio Complete Edition



SMA80011: Maintenance 1 Year - Studio Fashion or Studio Shape Edition added to Qualify  
Maintenance - Studio Fashion or Studio Shape Edition added to Qualify



SMA80012: Maintenance 1 Year - Fashion added to Wrap Studio or Shape Studio  
Maintenance - Fashion added to Wrap Studio or Shape Studio



SMA80014: Maintenance 1 Year - Blade - Node or Float  
Maintenance - Geomagic Blade - Node or Float



SMA80015: Maintenance 1 Year - Catia V Importer - Node  
Maintenance - Catia V Importer - Node or Float



SMA80016: Maintenance 1 Year - Catia V Importer - Float  
Maintenance - Catia V Importer - Float



SMA80017: Maintenance 1 Year - Catia IV Importer - Node  
Maintenance - Catia IV Importer - Node



SMA80018: Maintenance 1 Year - Catia IV Importer - Float  
Maintenance - Catia IV Importer - Float



SMA80019: Maintenance 1 Year - UniGraphics Importer - Node or Float  
Maintenance - UniGraphics Importer - Node or Float



SMA80020: Maintenance 1 Year - SolidWorks Importer - Node or Float  
Maintenance - SolidWorks Importer - Node or Float



SMA80021: Maintenance 1 Year - Capture added to existing Wrap.  
Maintenance 1 year - Capture added to existing Wrap.



SMA80022: Maintenance 1 Year - Fashion  
Maintenance 1 Year - Fashion



SMA80023: Maintenance 1 Year - Shape Added to Studio Fashion  
Maintenance 1 Year - Shape Added to Studio Fashion





SMA80024: Maintenance 1 Year - Shape Added to Studio Fashion with Qualify  
Maintenance 1 Year - Shape Added to Studio Fashion with Qualify



SMA80025: Maintenance 1 Year - Renewal-All Educational Seats co-terminus  
Maintenance 1 Year - All Educational Seats co-terminus. Educational Maintenance is one time annual fee for all seats



SMA80028: Maintenance Fashion  
Maintenance Fashion



SMA80029: Maintenance Shape  
Maintenance Shape

## New River Kinematics



SMA70000: SA Basic-X Maintenance  
Maintenance and support for SA Basic. Includes 12 months of maintenance, upgrades, internet and telephone support.



SMA70000-GRP: Group SA Basic License Maintenance  
Spatial Analyzer Basic Group License Maintenance Extension (per 100 users). Includes 12 months of maintenance, upgrades, internet and telephone support.



SMA70001: SA Ultimate Maintenance  
Maintenance and support for SA Ultimate. Includes 12 months of maintenance, upgrades, internet and telephone support.



SMA70001-GRP: Group SA Ultimate Maintenance  
Maintenance and support for Group SA Ultimate. Includes 12 months of maintenance, upgrades, internet and telephone support.



SMA70002: SA Ultimate + CAD-X Maintenance  
Maintenance and support for SA Ultimate + Native CAD. Includes 12 months of maintenance, upgrades, internet and telephone support.



SMA70002-GRP: Group SA Ultimate + CAD-X Maintenance  
Maintenance and support for Group SA Ultimate + Native CAD. Includes 12 months of maintenance, upgrades, internet and telephone support.



## Delcam



### DLCM-01: FARO PowerINSPECT Maintenance - First Year

FARO PowerInspect Annual Maintenance for SOFT0375. First year only. Must purchase maintenance direct from Delcam beyond first year.



### DLCM-03: FARO PowerINSPECT Lite Maintenance - First Year

FARO PowerInspect Annual Maintenance for SOFT0383. First year only. Must purchase maintenance direct from Delcam beyond first year.



### DLCM-05: Delcam Point Cloud Offline Maintenance - First Year

Delcam Point Cloud Offline Maintenance for SOFT0374. First year only. Must purchase maintenance direct from Delcam beyond first year.



### DLCM-07: Delcam Point Cloud Real Time Maintenance - First Year

Delcam Point Cloud Real Time Maintenance for SOFT0373. First year only. Must purchase maintenance direct from Delcam beyond first year.



### DLCM-11: Delcam PS-Exchange Pro Maintenance - First Year.

Delcam PS-Exchange Pro Maintenance for SOFT0381. First year only. Must purchase maintenance direct from Delcam beyond first year.



### DLCM-13: Delcam CATIA Import Maintenance - First Year

Delcam CATIA Import Maintenance for SOFT0380. First year only. Must purchase maintenance direct from Delcam beyond first year.



### DLCM-17: Delcam ProE Import Maintenance - First Year

Delcam ProE Import Maintenance for SOFT0378. First year only. Must purchase maintenance direct from Delcam beyond first year.



### DLCM-19: Delcam Unigraphics Import Maintenance - First Year

Delcam Unigraphics Import Maintenance for SOFT0377. First year only. Must purchase maintenance direct from Delcam beyond first year.



### DLCM-21: Delcam SolidWorks Import Maintenance - First Year

Delcam SolidWorks Import Maintenance for SOFT0376. First year only. Must purchase maintenance direct from Delcam beyond first year.



**DLCM-23: Delcam SolidEdge Import Maintenance - First Year**

Delcam SolidEdge Import Maintenance for SOFT0387. First year only. Must purchase maintenance direct from Delcam beyond first year.



**DLCM-25: Delcam Parasolid Import Maintenance - First Year**

Delcam Parasolid Import Maintenance for SOFT0388. First year only. Must purchase maintenance direct from Delcam beyond first year.



**DLCM-27: Delcam Cimatron Import Maintenance - First Year**

Delcam Cimatron Import Maintenance for SOFT0389. First year only. Must purchase maintenance direct from Delcam beyond first year.



**DLCM-29: Delcam SDRC Ideas Import Maintenance - First Year**

Delcam SDRC Ideas Import Maintenance for SOFT0390. First year only. Must purchase maintenance direct from Delcam beyond first year.



**DLCM-33: Delcam Rhino Import and Export Maintenance - First Year**

Delcam Rhino Import and Export Maintenance for SOFT0392. First year only. Must purchase maintenance direct from Delcam beyond first year.



**DLCM-35: Delcam ACIS Import Maintenance - First Year**

Delcam ACIS Import Maintenance for SOFT0393. First year only. Must purchase maintenance direct from Delcam beyond first year.



**DLCM-49: Delcam Autodesk Inventor Import- First Year**

Delcam Autodesk Import Maintenance for SOFT0411. First year only. Must purchase maintenance (DLCM-49) direct from Delcam beyond first year.

## Rental



**SOFT90001-RNT: PolyWorks/Modeler & Inspector, with NURBS 30-Day Rental**

PolyWorks/Modeler & Inspector, with NURBS 30-day license for PRODUCTION purposes. Note: One-month credit will be applied on the list price of the license to be purchased, provided that InnovMetric receives a purchase order within 90 days following the end of the rental period. (Applies only if the rented license is the same as the purchased license. If the case, please mention 'Includes Rental Credit' on the PO.)



**SOFT90002-RNT: PolyWorks/Modeler & PolyWorks/Inspector 30-Day Rental**

PolyWorks/Modeler & PolyWorks/Inspector 30-day license for PRODUCTION purposes. Note: If the customer decides to purchase the PolyWorks license after having rented it, a one-month credit will be applied on the list price of the license to be purchased, provided that InnovMetric receives a purchase order within 90 days following the end of the rental period. (Applies only if the rented license is the same as the purchased license. If the case, please mention 'Includes Rental Credit' on the PO.)



## SOFT90003-RNT: PolyWorks/Modeler with NURBS 30-Day Rental

PolyWorks/Modeler with NURBS 30-day license for PRODUCTION purposes. Note: One-month credit will be applied on the list price of the license to be purchased, provided that InnovMetric receives a purchase order within 90 days following the end of the rental period. (Applies only if the rented license is the same as the purchased license. If the case, please mention 'Includes Rental Credit' on the PO.)



## SOFT90004-RNT: PolyWorks/Modeler 30-Day Rental

PolyWorks/Modeler 30-day license for PRODUCTION purposes. Note: One-month credit will be applied on the list price of the license to be purchased, provided that InnovMetric receives a purchase order within 90 days following the end of the rental period. (Applies only if the rented license is the same as the purchased license. If the case, please mention 'Includes Rental Credit' on the PO.)



## SOFT90005-RNT: PolyWorks/Inspector 30-Day Rental

PolyWorks/Inspector 30-day license for PRODUCTION purposes. Note: One-month credit will be applied on the list price of the license to be purchased, provided that InnovMetric receives a purchase order within 90 days following the end of the rental period. (Applies only if the rented license is the same as the purchased license. If the case, please mention 'Includes Rental Credit' on the PO.)



## SOFT90028-RNT: PolyWorks/Surveyor 30-Day Rental

PolyWorks/Surveyor 30-day license for PRODUCTION purposes. Note: One-month credit will be applied on the list price of the license to be purchased, provided that InnovMetric receives a purchase order within 90 days following the end of the rental period. (Applies only if the rented license is the same as the purchased license. If the case, please mention 'Includes Rental Credit' on the PO.)



## SOFT90029-RNT: PolyWorks/Surveyor & Modeler 30-Day Rental

PolyWorks/Surveyor & Modeler 30-day license for PRODUCTION purposes. Note: One-month credit will be applied on the list price of the license to be purchased, provided that InnovMetric receives a purchase order within 90 days following the end of the rental period. (Applies only if the rented license is the same as the purchased license. If the case, please mention 'Includes Rental Credit' on the PO.)

## Other



## SOFT90025: Polyworks Additional Dongle (USB)

Polyworks Additional Dongle (USB)

## Training

### FARO

#### Facility

##### Arm



#### TR-BM-POR-F: FaroArm Basic CAM2 4.0 Training - 3-Day - Facility

FaroArm Basic CAM2 4.0 Training - One (1) Trainee. 3-Day course with 2 days of basic product fundamentals and a third day of advanced and application specific topics. Discusses FaroArm setup, basic measurements, working with nominals, CAD-to-part inspection and programming. Training to be conducted at an approved FARO Training Facility. Priced per person. NOTE: Classroom Trainings are limited to 8 trainee and are scheduled on a first come first served basis. Classes can be canceled within two weeks of the scheduled date if sufficient enrollment is not met. Training must be taken within 90 days of purchase.



#### TR-MX-BM-POR-F: FaroArm Basic CAM2 X Training - 3 Day - Facility

FaroArm Basic CAM2 X Training at FARO Facility - One (1) Trainee. 3-Day course with 2 days of basic product fundamentals and a third day of advanced and application specific topics. Discusses FaroArm setup, CAM2 X basic measurements, working with nominals, CAD-to-part inspection and programming. Training to be conducted at an approved FARO Training Facility. Priced per person. NOTE: Classroom Trainings are limited to Eight (8) trainees and are scheduled on a first come first served basis. Classes can be canceled within two weeks of the scheduled date if sufficient enrollment is not met. Training must be taken within 90 days of purchase.



#### TR-MX-BM-POR-FPOS: FaroArm Basic CAM2 X Training - Extra Person - Facility

Basic CAM2 Training at FARO Facility for Extra Person - 3-Day course for one additional trainee to join 2 trainees in an approved FARO training facility. Available at POINT OF SALE ONLY when purchasing TR-PSA-CAMX. Training must be taken within 90 days of purchase. NOTE: Classroom Trainings are limited to Eight (8) trainee and are scheduled on a first come first served basis. Classes can be canceled within two weeks of the scheduled date if sufficient enrollment is not met.



#### TR-PSA-CAMX: FaroArm Basic CAM2 X Training POS - 3-Day - Facility

FaroArm Basic CAM2 X Training at FARO Facility- 3-Day course for Two (2 ) trainees at an approved FARO training facility. Class schedule is 2 days of basic product fundamentals and a third day of advanced and application specific topics for Discusses FaroArm setup, basic measurements, working with nominals, CAD-to-part inspection and programming. Training to be taken within 90 days of original equipment purchase. NOTE: Classroom Trainings are limited to Eight (8) trainees and are scheduled on a first come first served basis. Classes can be canceled within two weeks of the scheduled date if sufficient enrollment is not met.



#### TR-Q-ARM-F: FaroArm CAM2 Q Basic - 3-Day - Facility

FaroArm Basic 3-Day CAM2 Q Facility Training. One (1) Trainee. This 3-Day course has 2 days of basic product fundamentals and a third day of advanced and application specific topics. Additionally, the course discusses FaroArm setup, CAM2 Q basic measurements, working with nominals, CAD-to-part inspection and programming. Training to be conducted at an approved FARO Training Facility. Priced per person. NOTE: Classroom trainings are limited to Eight (8) trainees and are scheduled on a first come first served basis. Classes can be canceled within two weeks of the scheduled date if sufficient enrollment is not met. Training must be taken within 90 days of purchase.



#### TR-Q-ARM-FA: FaroArm CAM2 Q Basic Training for Extra Person- 3-Day - Facility

FaroArm CAM2 Q Basic FARO Facility for Extra Person - 3-Day course for one additional trainee to join Two (2) trainees at an approved FARO training facility. Training covers topics from device set-up, basic measurement, and reporting. Price includes 1 Trainee. Available only at POINT OF SALE when purchasing class TR-Q-ARM-POS. Training must be taken within 90 days of purchase. NOTE: Classroom Trainings are limited to Eight (8) trainee and are scheduled on a first come first served basis. Classes can be canceled within two weeks of the scheduled date if sufficient enrollment is not met.



## TR-Q-ARM-POS: FaroArm CAM2 Q Basic Training POS - 3-Day - Facility

FaroArm CAM2 Q Basic 3-Day Facility Training POS. 3-Day training covers topics from device set-up, basic measurement, and reporting. Price includes three (3) days at a FARO Facility for two (2) Trainees. Training must be taken within 90 days of purchase. This training must be reserved by contacting the FARO Training administrator within 60 days of purchase. After 90 days, if no reservation has been made, this point-of sale no cost training offer will expire. NOTE: Classroom Trainings are limited to Eight (8) trainee and are scheduled on a first come first served basis. Classes can be canceled within two weeks of the scheduled date if sufficient enrollment is not met.



## TR-Q-ARM-TRX: CAM2 Q Training - for transitioning from other FARO software

This CAM2 Q training is free to customers who are currently using FARO Software (CAM2 Measure, Insight or Automotive) when purchasing CAM2 Q at the transition price. This Training includes 1 seat of training in a 3-day CAM2 Q Basic Training class. Additional seats of training can be purchased with TR-Q-ARM-TRX-A. This training must be reserved by contacting the FARO Training administrator within 60 days of purchase. Please call your local FARO Office to schedule. After 90 days, if no reservation has been made, this no cost training offer will expire.



## TR-Q-ARM-TRX-A: CAM2 Q Training - for transitioning from other FARO Software (Extra Person)

This is an extra seat of training to be added to TR-Q-ARM-TRX. Must also be purchased with CAM2 Q software. This training includes 1 additional seat in a 3-day CAM2 Q Basic training class. Training must be taken within 90 days of purchase.

## On-site



## TR-ALL-POR-O: FaroArm On-site Upgrade for Basic CAM2 X Training POS - 3-Day - On-site

FaroArm On-site Upgrade for CAM2 X Training. Upgrade training class (TR-PSA-CAMX) at POINT-OF-SALE to 3-Day basic training on-site course for up to Four (4) trainees. Priced per class. Training conducted at customer facility. NOTE: On-Site Trainings are designed for up to Four (4) trainees to ensure proper transfer of knowledge and understanding. This part number is to be sold only with the purchase of new equipment and is meant to replace training at a FARO facility. Shipping and travel expenses are included. Training must be taken within 90 days of purchase.



## TR-AS-POR-OA: FaroArm Application Training CAM2 4.0 - Extra Day

FaroArm Application Training CAM2 4.0 . An extra day hands-on FARO Arm CAM2 4.0 training session to help solve customer specific applications. Training to be conducted at customer site. NOTE: Class size is limited to Six (6) trainees and this additional day must be taken in conjunction with class TR-AS-POR-O. Training must be taken within 90 days of purchase.



## TR-MX-AS-POR-O: FaroArm Application Training CAM2 X - 1 Day - On-Site

FaroArm Application Training On-Site. A 1-Day hands-on FARO Arm CAM2 X training session to help solve customer specific applications. Training to be conducted at customer site. Shipping and travel expenses are included. Priced per class. NOTE: Class size is limited to Six (6) trainees. Training must be taken within 90 days of purchase.



## TR-MX-AS-POR-OA: FaroArm Application Training CAM2 X - Extra Day - On-Site

FaroArm Application Training CAM2 X - Extra Day . A 1-Day session which will be a hands-on CAM2 X training session to help solve customer specific applications. Training to be conducted at customer site. Note: Priced per class. This additional day added to class must be taken in conjunction with TR-MX-AS-POR-O . Class sized is limited to Six (6) trainees.



## Arm



### TR-AS-POR-O: FaroArm Application Training CAM2 4.0 - 1-Day - On-Site

FaroArm Application Training CAM2 4.0. A 1-Day hands-on FARO Arm CAM2 4.0 training session to help solve customer specific applications. Training to be conducted at customer site. Shipping and travel expenses are included. Priced per class. NOTE: Class size is limited to Six (6) trainees. Training must be taken within 90 days of purchase.



### TR-BM-POR-O: FaroArm Basic CAM2 4.0 Training - 3-Day - On-site

FaroArm 3-Day Basic CAM2 4.0 course. 2 days of basic product fundamentals and a third day of advanced and application specific topics for up to four (4) trainees that discusses FaroArm setup, basic measurements, working with nominals, CAD-to-part inspection and programming. Training to be conducted at customer site. Shipping and travel expenses are included. Priced per class. NOTE: On-Site Trainings are designed for up to Four (4) trainees to ensure proper transfer of knowledge and understanding. Training to be taken within 90 days of original purchase.



### TR-MX-BM-POR-O: FaroArm Basic CAM2 X Training - 3-Day - On-site

FaroArm Basic CAM2 X Training On-Site. 3-Day course with 2 days of basic product fundamentals and a third day of advanced and application specific topics for up to Four (4) trainee that discusses FaroArm setup, CAM2 X basic measurements, working with nominals, CAD-to-part inspection and programming. Training to be conducted at customer site. Shipping and travel expenses are included. Priced per class. NOTE: On-Site Trainings are designed for up to Four (4) trainee to ensure proper transfer of knowledge and understanding. Training to be taken within 90 days of original purchase.



### TR-Q-ARM-FO: FaroArm CAM2 Q Basic Training - 3-Day - On-site

FaroArm Basic 3-Day CAM2 Q On-Site Training. This course discusses FaroArm setup, CAM2 Q basic measurements, working with nominals, coordinate systems and moving the device. Training to be conducted at the customer's location. Training must be taken within 90 days of purchase. NOTE: On-Site Trainings are designed for up to Four (4) trainees to ensure proper transfer of knowledge and understanding.



### TR-Q-ARM-PSA-FO: FaroArm Basic POS CAM2 Q Upgrade - 3-Day - Facility

FaroArm Basic 3-Day Facility POS CAM2 Q Upgrade training. This is an On-site upgrade for CAMQ Training Point of Sale - Upgrade your 3 day basic training (TR-Q-ARM-POS) to an On-site course for up to Four (4) trainees. Priced per class. Training conducted at customer facility. NOTE: On-Site Trainings are designed for up to Four (4) trainees to ensure proper transfer of knowledge and understanding. This part number is to be sold only with the purchase of new equipment and is meant to replace training at a FARO facility. Training must be taken within 90 days of purchase.

## 3rd Party

### Facility

#### New River Kinematics



### STR80020: SA Introduction to Spatial Analyzer Training - Facility

Basic Spatial Analyzer Course. Three Days at New River Kinematics offices Williamsburg VA facility. Customer responsible for students travel, transportation, lodging and meal expenses. Priced per student. Minimum 4,500.00 or 3 students to hold class. Maximum class size 8 students.



### STR80020\_Add\_Student: Add Student to SA Introduction to Spatial Analyzer Training - Facility

Add additional student to Basic Spatial Analyzer Course. Three Days at New River Kinematics offices Williamsburg VA facility. Customer responsible for students travel, transportation, lodging and meal expenses. Maximum class size 8 students.



## STR80026: SA Basic Spatial Analyzer Training - Facility

Basic Spatial Analyzer Course. Three Days at New River Kinematics offices Williamsburg VA facility. Customer responsible for students travel, transportation, lodging and meal expenses. Priced per student. Minimum \$4,500.00 or 3 students to hold class. Maximum class size 5 students.



## STR80026\_Add\_Student: Add Student to SA Basic Spatial Analyzer Training - Facility

Add additional student to Basic Spatial Analyzer Course. Three Days at New River Kinematics offices Williamsburg VA facility. Customer responsible for students travel, transportation, lodging and meal expenses. Priced per student. Maximum class size 8 students.

### Geomagic



## STR80001: Wrap with Capture Training (2 days) Geomagic Facility - North Carolina, USA

Training - Geomagic Wrap with Capture - Two days instructor-led course. Travel and lodging expense paid by student. Priced per person.



## STR80002: Qualify Training (3 days) Geomagic Facility - North Carolina, USA

This three-day instructor-led course is designed to help users evaluate the benefits of computer-aided inspection and how to succeed in developing automated inspection processes. The user will learn how to align scan data with CAD models, compare the scan data to the CAD models, perform additional analysis, generate reports and automate this inspection process for repeatability. Travel and lodging expense paid by student. Priced per person.



## STR80003: Studio Shape Edition Training (3 days) Geomagic Facility - North Carolina, USA

Geomagic Facility - North Carolina, USA - This three-day instructor-led course covers the concept of using Digital Shape Sampling and Processing (DSSP) with Geomagic Studio Shape Edition. The user will learn how to interact with the application, edit point cloud data, generate and edit STL models and generate NURBS surfaces for downstream applications. Travel and lodging expense paid by student. Priced per person.



## STR80004: Studio Shape Edition and Qualify Training (5 days) Geomagic Facility - North Carolina, USA

Geomagic Facility - North Carolina, USA - This five-day instructor-led course covers Geomagic Studio Shape Edition - Course covers the concept of using Digital Shape Sampling and Processing (DSSP) with Geomagic Studio Shape Edition. The user will learn how to interact with the application, edit point cloud data, generate and edit STL models and generate NURBS surfaces for downstream applications. Geomagic Qualify - Course is designed to help users evaluate the benefits of computer-aided inspection and how to succeed in developing automated inspection processes. The user will learn how to align scan data with CAD models, compare the scan data to the CAD models, perform additional analysis, generate reports and automate this inspection process for repeatability. Travel and lodging expense paid by student. Priced per person.



## STR80005: Studio Fashion Edition Training (3 days)- Geomagic Facility - North Carolina, USA.

This three-day instructor-led course covers the concept of using Digital Shape Sampling and Processing (DSSP) with Geomagic Studio Fashion Edition. The user will learn how to interact with the application, edit point cloud data, generate and edit STL models and generate CAD-like surfaces for downstream applications. Travel and lodging expense paid by student. Priced per person.



STR80006: Studio Fashion Edition with Qualify Training (5 days) - Geomagic Facility - North Carolina, USA

This five-day instructor-led course covers: Geomagic Studio Fashion - This course covers the concept of using Digital Shape Sampling and Processing (DSSP) with Geomagic Studio Fashion Edition. The user will learn how to interact with the application, edit point cloud data, generate and edit STL models and generate CAD-like surfaces for downstream applications. Geomagic Qualify - Course is designed to help users evaluate the benefits of computer-aided inspection and how to succeed in developing automated inspection processes. The user will learn how to align scan data with CAD models, compare the scan data to the CAD models, perform additional analysis, generate reports and automate this inspection process for repeatability. Priced per person.



STR80007: Studio Complete Training (4 days) Geomagic Facility - North Carolina, USA.

This four-day instructor-led course covers the concept of using Digital Shape Sampling and Processing (DSSP) with Geomagic Studio Complete Edition. The user will learn how to interact with the application, edit point cloud data, generate and edit STL models and generate NURBS surfaces or CAD-like surfaces for downstream application. Priced per person.



STR80017: Studio Shape Edition Training Advanced Class (2 days) Geomagic Facility - North Carolina, USA

Geomagic Facility - North Carolina, USA - Studio Shape Edition Advanced Class (2 days) Travel and lodging expense paid by student. Priced per person.



STR80018: Studio Shape Edition Advanced Training Class (2 days) Onsite North America

Studio Shape Edition Training Advanced Class (2 days) Onsite North America. 8 students maximum, plus travel.



STR80019: Custom Additional Day Onsite Training North America

Custom Additional Day Onsite Training North America. Must be added to existing class. 8 students maximum, plus travel. \$2,000.00 per day.



STR80029: Travel -Actual Expenses Billed Post Training

All inclusive travel expenses for on-site training - Actual expenses billed post training. Mandatory 2 weeks required notice of the training to Geomagic before scheduling class. Expenses include travel, food and lodging. (US Only)



STR90001: PolyWorks/ Modeler&Inspector pkg - 5 day FACILITY training

5-day 'basic' training on PolyWorks/Modeler&Inspector package (T5QB), at InnovMetric (Quebec City). 'Classroom type' training at pre-determined dates. Up to TWO trainees may register for each license ordered. Trainees must bear their own T&L expenses. Must both register to the same Classroom training and confirm directly with InnovMetric. Must be scheduled within one year from license purchase. After one year, regular fees to apply.



STR90001-ADD: PolyWorks/ Modeler&Inspector pkg - 5 day FACILITY training- 1 Additional Trainee

One (1) additional trainee for 5-day 'basic' training (STR90001) on PolyWorks/Modeler & Inspector™, at InnovMetric (Quebec City). Limit Six (6) total trainees for class and all must attend same class. Trainee must bear their own T&L expenses.



STR90002: PolyWorks/Modeler OR on PolyWorks/Inspector package - 3 day FACILITY training

3-day 'basic' training on PolyWorks/Modeler OR on PolyWorks/Inspector package, at InnovMetric (Quebec City). 'Classroom type' training at pre-determined dates. Up to TWO trainees may register for each license ordered. Trainees must bear their own T&L expenses. Must both register to the same Classroom training and confirm directly with InnovMetric. Must be scheduled within one year from license purchase. After one year, regular fees to apply.



STR90002-ADD: PolyWorks/ Modeler or Inspector pkg - 3 day FACILITY training- 1 Additional Trainee

1 additional trainee for 3day 'basic' training on PolyWorks/Modeler OR on PolyWorks/Inspector package, at InnovMetric (Quebec City). Limit 6 total trainees for class and all must attend same class. Trainee must bear their own T&L expenses.



STR90006: PolyWorks/Modeler OR on PolyWorks/Inspector package - 3-day 'Advanced' FACILITY training

3-day 'advanced' training on PolyWorks/Modeler OR on PolyWorks/Inspector package, at InnovMetric (Quebec City). Trainees must bear their own T&L expenses. For up to 6 people. Client must have attended a PolyWorks 'basic' training prior to ordering an 'advanced' training.



STR90010: PolyWorks/Inspector Probing package - 2-day FACILITY training

2-day training on PolyWorks/Inspector Probing package, at InnovMetric (Quebec City). 'Hands-on' training at pre-determined dates. Up to two trainees may register. Trainees must bear their own T&L expenses. Must both register to the same training and confirm directly with InnovMetric. Note : No more than four attendants (from two different organizations) in total for any such training.

## Delcam



DLCM-39: Basic Power Inspect Training - 2 Day

Training on Delcam software at an approved Delcam Location for 2 people. Travel and Lodging expenses not included.

## Verisurf



STR80021: Verisurf Basic Training Bundle, 3 days at Verisurf HQ Anaheim, Calif. U.S.

Basic Training Verisurf Bundle, 3 days up to 4 persons, at Verisurf HQ Anaheim, Calif. U.S. Covers the basics of running all bundled modules at Verisurf HQ. Price is per group. (Student is responsible for travel and lodging.)



STR80022: Verisurf Basic Training Bundle, 3 days onsite in U.S.

Basic Training Verisurf Bundle, 3 days up to 4 persons, onsite at Customer Location in U.S. Covers the basics of running all bundled modules at Customer location. Price is per group. (Instructor travel and lodging included.)



STR80023: Verisurf Basic Training Bundle, Facility, 3 days, outside U.S.

Basic Training Verisurf Bundle, 3 days up to 4 persons, at Customer Location outside U.S. Covers the basics of running all bundled modules at customer location outside the US. (Instructor travel and lodging included.)



## STR80024: Verisurf Off-Hours Training

Off-Hours Training: Additional charge for off-hours training start time begins at 5:00 PM. Price is per session. Up to 4 students.



## STR80025: Verisurf Additional Days of Training

Additional Days of Training (at either Verisurf or cust. location USA). Additional training mostly at advanced level or specific to customer's application. Price is per group. Price is per day. Up to 4 students.

## On-site

### 3 Day



## STR90003: PolyWorks/Modeler package - 3-day 'basic' ON-SITE training

3-day 'basic' training on PolyWorks/Modeler package, on-site. Trainer travel expenses included. Training at customer site for up to 6 people. (USA, Canada, Mexico)



## STR90003-SA: PolyWorks/Modeler package - 3-day 'basic' ON-SITE training

3-day 'basic' training on PolyWorks/Modeler package, on-site. Trainer travel expenses included. Training at customer site for up to 6 people. (South America)



## STR90004: PolyWorks/Inspector package - 3-day 'basic' ON-SITE training

3-day 'basic' training on PolyWorks/Inspector package, on-site. Trainer travel expenses included. Training at customer site for up to 6 people. (USA, Canada, Mexico)



## STR90004-SA: PolyWorks/Inspector package - 3-day 'basic' ON-SITE training

3-day 'basic' training on PolyWorks/Inspector package, on-site. Trainer travel expenses included. Training at customer site for up to 6 people. (South America)



## STR90005: PolyWorks/Modeler 3-day 'basic' ON-SITE training AND PolyWorks/Inspector package 3-day 'basic' ON-SITE training

3-day 'basic' training on PolyWorks/Modeler, AND an additional 3-day 'basic' training on PolyWorks/Inspector package, on-site. Scheduled at two different times. Trainer travel expenses included. Training at customer site for up to 6 people. Client must have ordered at least one PolyWorks/Modeler&Inspector package. (USA, Canada, Mexico)



## STR90005-SA: PolyWorks/Modeler 3-day 'basic' ON-SITE training AND PolyWorks/Inspector package 3-day 'basic' ON-SITE training

3-day 'basic' training on PolyWorks/Modeler, AND an additional 3-day 'basic' training on PolyWorks/Inspector package, on-site. Scheduled at two different times. Trainer travel expenses included. Training at customer site for up to 6 people. Client must have ordered at least one PolyWorks/Modeler&Inspector package. (South America)



## STR90007: PolyWorks/Modeler OR on PolyWorks/Inspector package - 3-day 'Advanced' ONSITE training

3-day 'advanced' training on PolyWorks/Modeler OR on PolyWorks/Inspector package, on-site. Trainer travel expenses included. Training at customer site for up to 6 people. (USA, Canada, Mexico)



STR90007-SA: PolyWorks/Modeler OR on PolyWorks/Inspector package - 3-day 'Advanced' ONSITE training

3-day 'advanced' training on PolyWorks/Modeler OR on PolyWorks/Inspector package, on-site. Trainer travel expenses included. Training at customer site for up to 6 people. (South America)



STR90008: "Surveying" training - 3-day ON-SITE training

3-day "Surveying" training, on-site. Trainer travel expenses included. Training at customer site for up to 6 people. (USA, Canada, Mexico)



STR90008-SA: "Surveying" training - 3-day ON-SITE training

3-day "Surveying" training, on-site. Trainer travel expenses included. Training at customer site for up to 6 people. (South America)



STR90009: PolyWorks/Inspector Probing package - 2-day ON-SITE training

2-day training on PolyWorks/Inspector Probing package, on-site. Trainer travel expenses included. Training at customer site for up to 6 people. (USA, Canada, Mexico)



STR90009-SA: PolyWorks/Inspector Probing package - 2-day ON-SITE training

2-day training on PolyWorks/Inspector Probing package, on-site. Trainer travel expenses included. Training at customer site for up to 6 people. (South America)

## Geomagic



STR80008: Wrap with Capture Training - Onsite (2 days) North America

Training - Geomagic Wrap with Capture - Instructor-led two day class. Eight (8) students maximum, plus travel. Actual travel expenses invoiced separately for on-site training.



STR80009: Qualify - Training On-Site (3 days) - North America

Actual travel expenses invoiced separately for on-site training. This three-day instructor-led course is designed to help users evaluate the benefits of computer-aided inspection and how to succeed in developing automated inspection processes. The user will learn how to align scan data with CAD models, compare the scan data to the CAD models, perform additional analysis, generate reports and automate this inspection process for repeatability. 8 students maximum, plus travel. Travel expenses invoiced separately.



STR80010: Studio Shape Edition - Training On-Site (3 days) - North America

Actual travel expenses invoiced separately for on-site training. This three-day instructor-led course covers the concept of using Digital Shape Sampling and Processing (DSSP) with Geomagic Studio Shape Edition. The user will learn how to interact with the application, edit point cloud data, generate and edit STL models and generate NURBS surfaces for downstream applications. 8 students maximum, plus travel. Travel expenses invoiced separately.





## STR80011: Studio Shape Edition with Qualify Training On-Site (5 days)- North America

Actual travel expenses invoiced separately for on-site training. This five-day instructor-led course covers: Geomagic Studio Shape Edition - Course covers the concept of using Digital Shape Sampling and Processing (DSSP) with Geomagic Studio Shape Edition. The user will learn how to interact with the application, edit point cloud data, generate and edit STL models and generate NURBS surfaces for downstream applications. Geomagic Qualify - Course is designed to help users evaluate the benefits of computer-aided inspection and how to succeed in developing automated inspection processes. The user will learn how to align scan data with CAD models, compare the scan data to the CAD models, perform additional analysis, generate reports and automate this inspection process for repeatability. 8 students maximum, plus travel. Travel expenses invoiced separately.



## STR80012: Studio Fashion Training On-Site (3 days)- North America

Actual travel expenses invoiced separately for on-site training. This three-day instructor-led course covers the concept of using Digital Shape Sampling and Processing (DSSP) with Geomagic Studio Fashion Edition. The user will learn how to interact with the application, edit point cloud data, generate and edit STL models and generate CAD-like surfaces for downstream applications. 8 students maximum, plus travel. Travel expenses invoiced separately.



## STR80013: Studio Fashion with Qualify Training On-Site (5 days) - North America

Actual travel expenses invoiced separately for on-site training. Geomagic Studio Fashion - This course covers the concept of using Digital Shape Sampling and Processing (DSSP) with Geomagic Studio Fashion Edition. The user will learn how to interact with the application, edit point cloud data, generate and edit STL models and generate CAD-like surfaces for downstream applications. Geomagic Qualify - Course is designed to help users evaluate the benefits of computer-aided inspection and how to succeed in developing automated inspection processes. The user will learn how to align scan data with CAD models, compare the scan data to the CAD models, perform additional analysis, generate reports and automate this inspection process for repeatability. 8 students maximum, plus travel. Travel expenses invoiced separately.



## STR80014: Studio Complete Edition Training On-Site (4 days) - North America

Actual travel expenses invoiced separately for on-site training. This four-day instructor-led course covers the concept of using Digital Shape Sampling and Processing (DSSP) with Geomagic Studio Complete Edition. The user will learn how to interact with the application, edit point cloud data, generate and edit STL models and generate NURBS surfaces or CAD-like surfaces for downstream application. 8 students maximum, plus travel. Travel expenses invoiced separately.



## STR80027: 4 Day Spatial Analyzer Training - Onsite

Spatial Analyzer Training tailored to customer requirements. Four (4) Days at Customer's Site. Includes All Training costs, airfare, lodging, meals and ground transportation for instructor. (Americas or Europe only). 8 Students Maximum. Priced per course.



## STR80028: 3 Day Spatial Analyzer Training - Onsite

Spatial Analyzer Training tailored to customer requirements. Three (3) days at Customer's Site, Includes All Training costs, airfare, lodging, meals and ground transportation for instructor. (Americas or Europe only). 8 Students Maximum. Priced per course.

### Delcam



## DLCM-40: Basic PowerInspect Training - 2 Day On-site

Training on Delcam software at customer's Location for 2 people 2 days. Trainer's travel and lodging expenses are included.



DLCM-41: Basic PowerInspect Training - 2 Day Extra Person

Additional person fee for on site or Delcam location training

## Warranty

### FaroArms

#### Digital Template

##### Certification



##### SCU-DT: Digital Template Certification

Certification includes FARO's 15 point check, inspection of cables, connections, boards, upgrade to latest engineering specifications, lubricate, clean, replace labels, re-calibration per ASME B89.4.22. Additional repair charges may apply if out of warranty.

##### Standard

##### 1 Month



##### ESP-DT-1: Standard Warranty Extension Digital Template - 1 Month

One Month extension to existing standard Arm warranty. This part number is not to be used as a stand alone warranty.



##### ESP-LLP-1: Laser Line Probe-1 Month Warranty Extension

One Month extension to existing standard Laser Line Probe warranty. This part number is not to be used as a stand alone warranty.



##### ESP-POR-1: Arm- 1 Month Warranty Extension

One Month extension to existing standard Arm warranty. This part number is not to be used as a stand alone warranty.

##### 1 Month



##### EPP-LLP-1: Laser Line Probe-1 Month Premium Warranty Extension

One Month extension to existing Premium Laser Line Probe warranty. This part number is not to be used as a stand alone warranty.



##### EPP-POR-1: Arm 1 Month Premium Warranty Extension

One Month extension to existing Premium Warr FaroArm warranty. This part number is not to be used as a stand alone warranty.



##### SWS-01: Standard Arm Warranty - 1YR

1 year standard warranty. Warranty includes annual arm certification, parts, labor and return shipping charges. Service goal is 7 working days from date of receipt.



##### SWS-DT: Standard DT Warranty - 1YR

1 year standard warranty. Warranty includes annual Digital Template Arm certification, parts, labor and return shipping charges. Service goal is 7 working days from date of receipt.

## 1 year



### PWS-DT: Premium DT Warranty - 1YR

1 year premium warranty. Warranty includes annual arm certification, parts, labor, ALL shipping charges and loaner Digital Template Arm shipped the next business day. Service goal is 7 working days from date of receipt. Loaner arm excluded for certification.

## Upgrade 1 year



### PWS-DT-1ST: Premium DT Warranty Upgrade - 1YR

3 year premium warranty. Warranty includes annual arm certification, parts, labor, ALL shipping charges and loaner Digital Template Arm shipped the next business day. Service goal is 7 working days from date of receipt. Loaner arm excluded for certification.



### PWS-DT-3-1ST: Premium DT Warranty Upgrade - 3YRS

Upgrade 1st year to a 3yr Premium warranty. POS only. Warranty includes annual arm certification, parts, labor, ALL shipping charges and loaner Digital Template Arm shipped the next business day. Service goal is 7 working days from date of receipt. Loaner arm excluded for certification.



### PWSS-01: Premium Arm Warranty Upgrade - 1YR

Upgrade 1st year to Premium warranty. POS only. Warranty includes annual arm certification, parts, labor, ALL shipping charges and loaner FaroArm shipped the next business day. Service goal is 7 working days from date of receipt. Loaner arm excluded for certification.



### SWS-DT-3: Standard DT Warranty - 3YRS

3 year standard warranty. Warranty includes annual Digital Template Arm certification, parts, labor and return shipping charges. Service goal is 7 working days from date of receipt.



### SWS-PF-03: Standard Arm Warranty - 3YRS

3 year standard warranty. Warranty includes annual arm certification, parts, labor and return shipping charges. Service goal is 7 working days from date of receipt.

## Upgrade 2 years



### PWS-QUANTUM-2: Premium Arm Warranty Upgrade - 2YR

Upgrade 2 year Quantum standard warranty to 2 year Premium warranty. POS only. Warranty includes annual arm certification, parts, labor, ALL shipping charges and loaner FaroArm shipped the next business day. Service goal is 7 working days from date of receipt. Loaner arm excluded for certification.

## 3 years



### PWS-DT-3: Premium DT Warranty - 3YRS



#### PWS-PF-03: Premium Arm Warranty - 3YRS

3 year premium warranty. Warranty includes annual arm certification, parts, labor, ALL shipping charges and loaner FaroArm shipped the next business day. Service goal is 7 working days from date of receipt. Loaner arm excluded for certification.

#### Upgrade 3 years



#### PWSS-PF-03: Premium Arm Warranty Upgrade - 3YRS

Upgrade 1st year to a 3 yr Premium warranty. POS only. Warranty includes annual arm certification, parts, labor, ALL shipping charges and loaner FaroArm shipped the next business day. Service goal is 7 working days from date of receipt. Loaner arm excluded for certification.

## Warranty

### Premium

#### 1 year



#### PWS-01: Premium Arm Warranty - 1YR

1 year premium warranty. Warranty includes annual arm certification, parts, labor, ALL shipping charges and loaner FaroArm shipped the next business day. Service goal is 7 working days from date of receipt. Loaner arm excluded for certification.

### Certification



#### SCU-00: FaroArm Certification

Certification includes FARO's 15 point check, inspection of cables, connections, boards, upgrade to latest engineering specifications, lubricate, clean, replace labels, re-calibration per ASME B89.4.22. Additional repair charges may apply if out of warranty.

## Laser Line Probe

### Premium

#### 1 year



#### SCPWS-01: Premium LLP Warranty - 1YR

1 year premium warranty for V2 and V3 LLP. Warranty includes annual certification, parts, labor, ALL shipping charges and loaner LLP shipped the next business day. Service goal is 7 working days from date of receipt.

#### Upgrade 1 year



#### SCPWSS-01: Premium LLP Warranty Upgrade - 1YR

Upgrade 1st year to Premium warranty for V2 and V3 LLP. POS only. Warranty includes annual certification, parts, labor, ALL shipping charges and loaner LLP shipped the next business day. Service goal is 7 working days from date of receipt.

#### 3 years



#### SCPWS-PF-03: Premium LLP Warranty - 3YRS

3 year premium warranty for V2 and V3 LLP. Warranty includes annual certification, parts, labor, ALL shipping charges and loaner LLP shipped the next business day. Service goal is 7 working days from date of receipt.



## Upgrade 3 years



SCPWSS-PF-03: Premium LLP Warranty Upgrade - 3YRS

Upgrade 1st year to a 3yr Premium warranty for V2 and V3 LLP. POS only. Warranty includes annual certification, parts, labor, ALL shipping charges and loaner LLP shipped the next business day. Service goal is 7 working days from date of receipt.

## Standard

### 1 year



SCSWS-01: Standard LLP Warranty - 1YR

1 year standard warranty for V2 and V3 LLP. Warranty includes (SCU-LLP), annual certification, parts, labor, return shipping charges. Service goal is 7 working days from date of receipt.

### 3 years



SCSWS-PF-03: Standard LLP Warranty - 3YRS

3 year standard warranty for V2 and V3 LLP. Warranty includes annual certification, parts, labor, return shipping charges. Service goal is 7 working days from date of receipt.

## Certification



SCU-LLP: Laser Line Probe Certification

Certification for V2 and V3 LLP includes inspection of cables, connections, boards, upgrade to latest engineering specifications, clean, replace labels and perform a certification. Additional repair charges may apply if out of warranty.





## Service

## Rental



### CRTL-LLP-RENTAL: Laser Line Probe Rental

Laser Line Probe Rental. All rentals are on a pre-payment basis. The quoted rate is for a one month rental.



### CRTL-ARM-RENTAL: FaroArm Rental

FaroArm Rental. Includes:FaroArm, base plate, standard probe kit (3mm and 6mm), rechargeable battery, cables, custom cover, heavy-duty case. All rentals are on a pre-payment basis. The quoted rate is for a one month rental.



### CRTL-POR-RENTAL: Control Station Rental

Control Station Rental with a FaroArm, Computer, Software and Tripod. All rentals are on a pre-payment basis. The quoted rate is for a one month rental.



### CRTL-SAS-RENTAL: ScanArm System Rental

ScanArm System Rental with a FaroArm, Laser Line Probe, Computer, and Software. All rentals are on a pre-payment basis. The quoted rate is for a one month rental.